

Production Worksheet

Wilcom EmbroideryStudio - Designing



Design: **3**

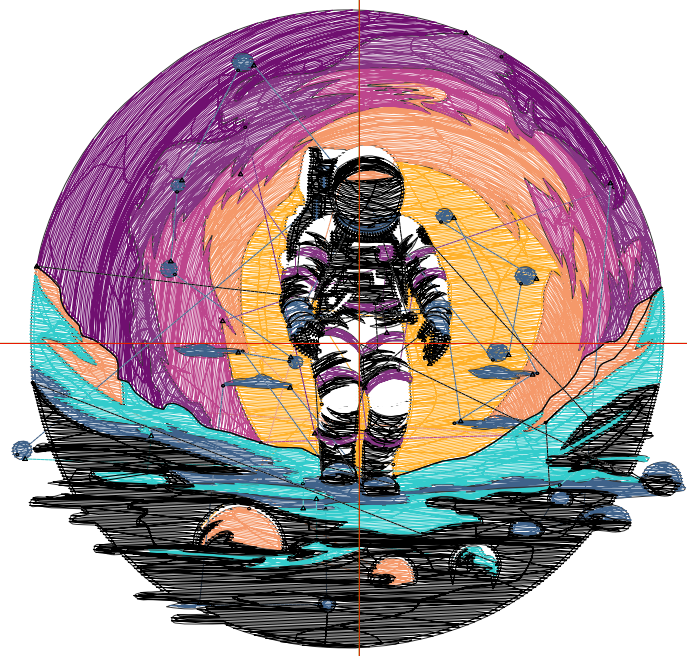
Title:

Stitches: 28,095
Height: 3.32 in
Width: 3.51 in
Colors: 9
Colorway: Colorway 1
Zoom: 1:1

Machine format: Tajima
Color changes: 8
Stops: 9
Trims: 87
Appliqués: 0
Left: 46.0 mm
Right: 43.2 mm
Up: 44.1 mm
Down: 40.3 mm
EndX: 0.00 in
EndY: 0.00 in
Area: 11.66 in²
Max stitch: 11.5 mm
Min stitch: 0.0 mm
Max jump: 7.0 mm
Total thread: 423.12ft
Total bobbin: 139.74ft

Stop Sequence:

#	N#	Color	St.	Code	Name	Chart
1.	9		2,621	9	White	Default
2.	7		2,302		R255 G177 B42	
3.	8		3,295		R245 G153 B106	
4.	6		2,786		R189 G70 B141	
5.	4		3,042		R133 G52 B131	
6.	2		2,331		R112 G15 B112	
7.	3		2,346		R63 G98 B138	
8.	5		2,464	5	Aqua	Default
9.	28		6,906	8	Black	Default



Production Worksheet

Wilcom EmbroideryStudio - Designing



Design: **4**

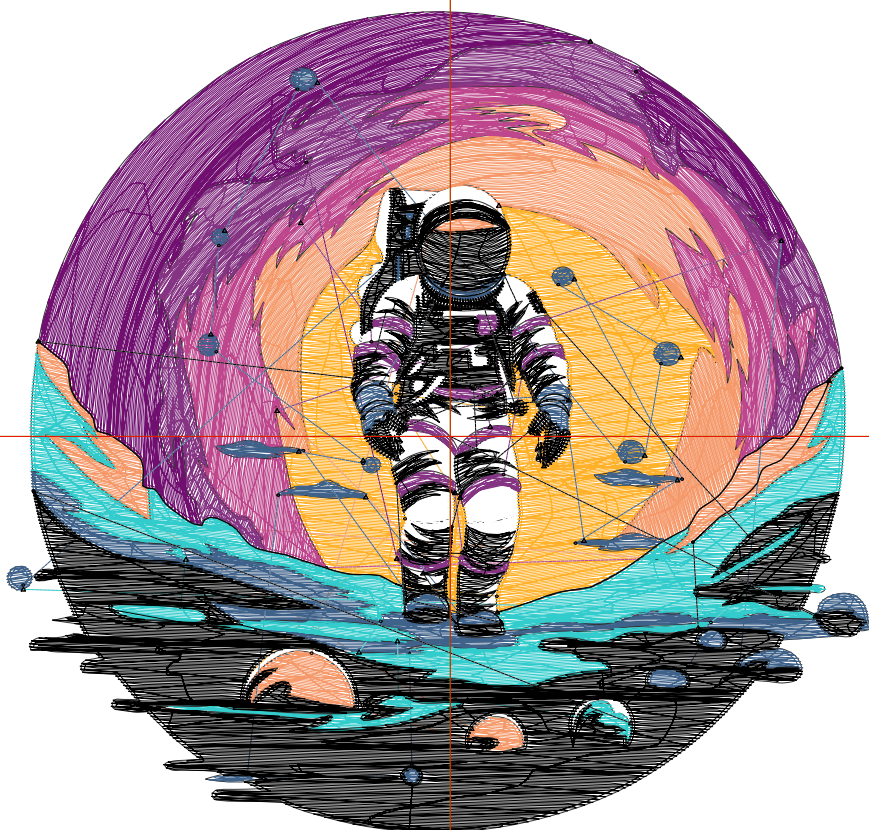
Title:

Stitches: 37,968
 Height: 4.27 in
 Width: 4.51 in
 Colors: 9
 Colorway: Colorway 1
 Zoom: 1:1

Machine format: Tajima
 Color changes: 8
 Stops: 9
 Trims: 94
 Appliqués: 0
 Left: 58.7 mm
 Right: 55.9 mm
 Up: 56.2 mm
 Down: 52.3 mm
 EndX: 0.00 in
 EndY: 0.00 in
 Area: 19.26 in²
 Max stitch: 11.9 mm
 Min stitch: 0.0 mm
 Max jump: 7.0 mm
 Total thread: 607.36ft
 Total bobbin: 210.53ft

Stop Sequence:

#	N#	Color	St.	Code	Name	Chart
1.	9		3,462	9	White	Default
2.	7		3,321		R255 G177 B42	
3.	8		3,648		R245 G153 B106	
4.	6		3,941		R189 G70 B141	
5.	4		4,094		R133 G52 B131	
6.	2		3,466		R112 G15 B112	
7.	3		3,108		R63 G98 B138	
8.	5		3,336	5	Aqua	Default
9.	28		9,590	8	Black	Default



Production Worksheet

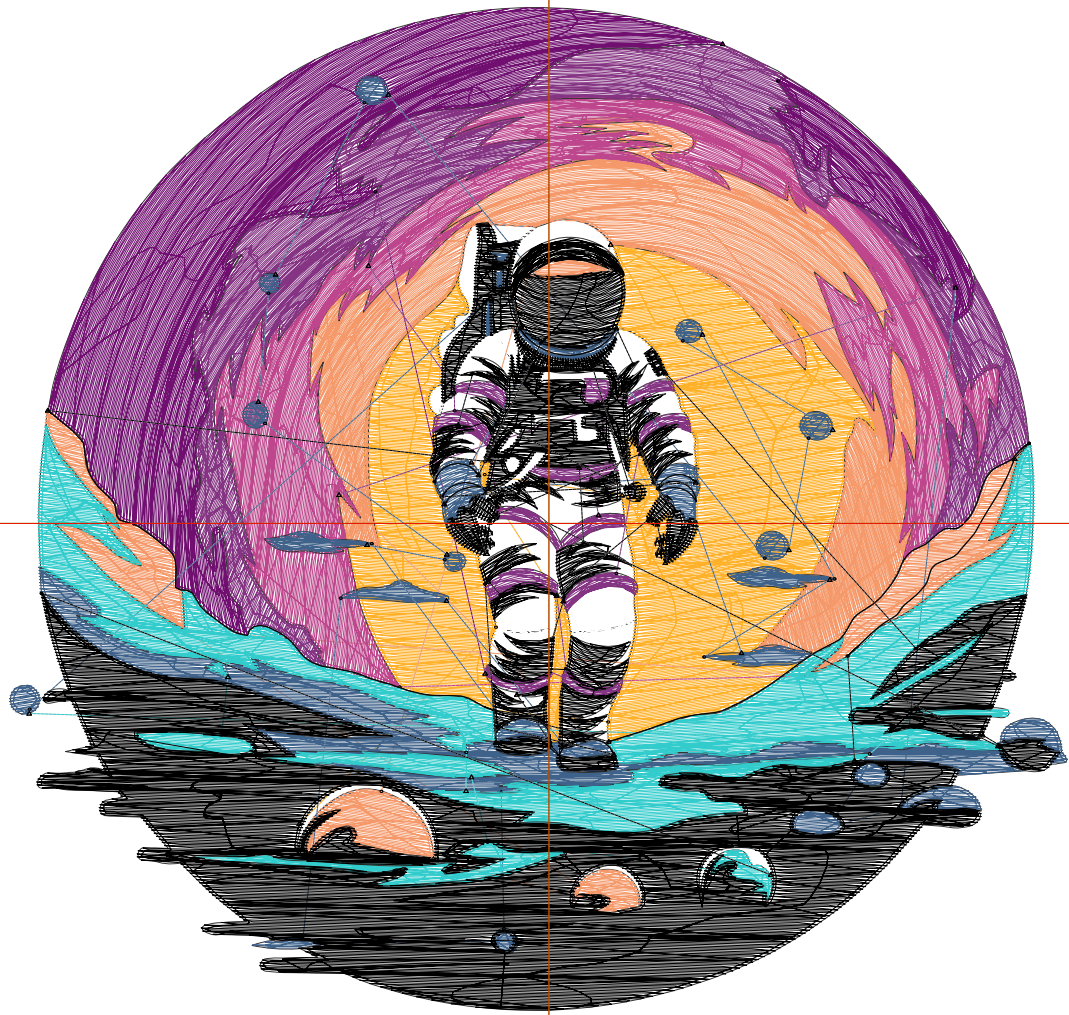
Wilcom EmbroideryStudio - Designing



Design: **5**

Title:

Stitches: 50,618
Height: 5.22 in
Width: 5.51 in
Colors: 9
Colorway: Colorway 1
Zoom: 1:1



Production Worksheet

Wilcom EmbroideryStudio - Designing



Design: **5**

Title:

Stitches: 50,618
 Height: 5.22 in
 Width: 5.51 in
 Colors: 9
 Colorway: Colorway 1
 Zoom: 1:1

Machine format: Tajima
 Color changes: 8
 Stops: 9
 Trims: 100
 Appliqués: 0
 Left: 71.4 mm
 Right: 68.6 mm
 Up: 68.3 mm
 Down: 64.4 mm
 EndX: 0.00 in
 EndY: 0.00 in
 Area 28.78 in²
 Max stitch: 11.8 mm
 Min stitch: 0.0 mm
 Max jump: 6.9 mm
 Total thread: 848.08ft
 Total bobbin: 303.99ft

Stop Sequence:

#	N#	Color	St.	Code	Name	Chart
1.	9		4,323	9	White	Default
2.	7		4,474		R255 G177 B42	
3.	8		5,976		R245 G153 B106	
4.	6		5,168		R189 G70 B141	
5.	4		5,386		R133 G52 B131	
6.	2		4,656		R112 G15 B112	
7.	3		3,917		R63 G98 B138	
8.	5		4,357	5	Aqua	Default
9.	28		12,359	8	Black	Default

Production Worksheet

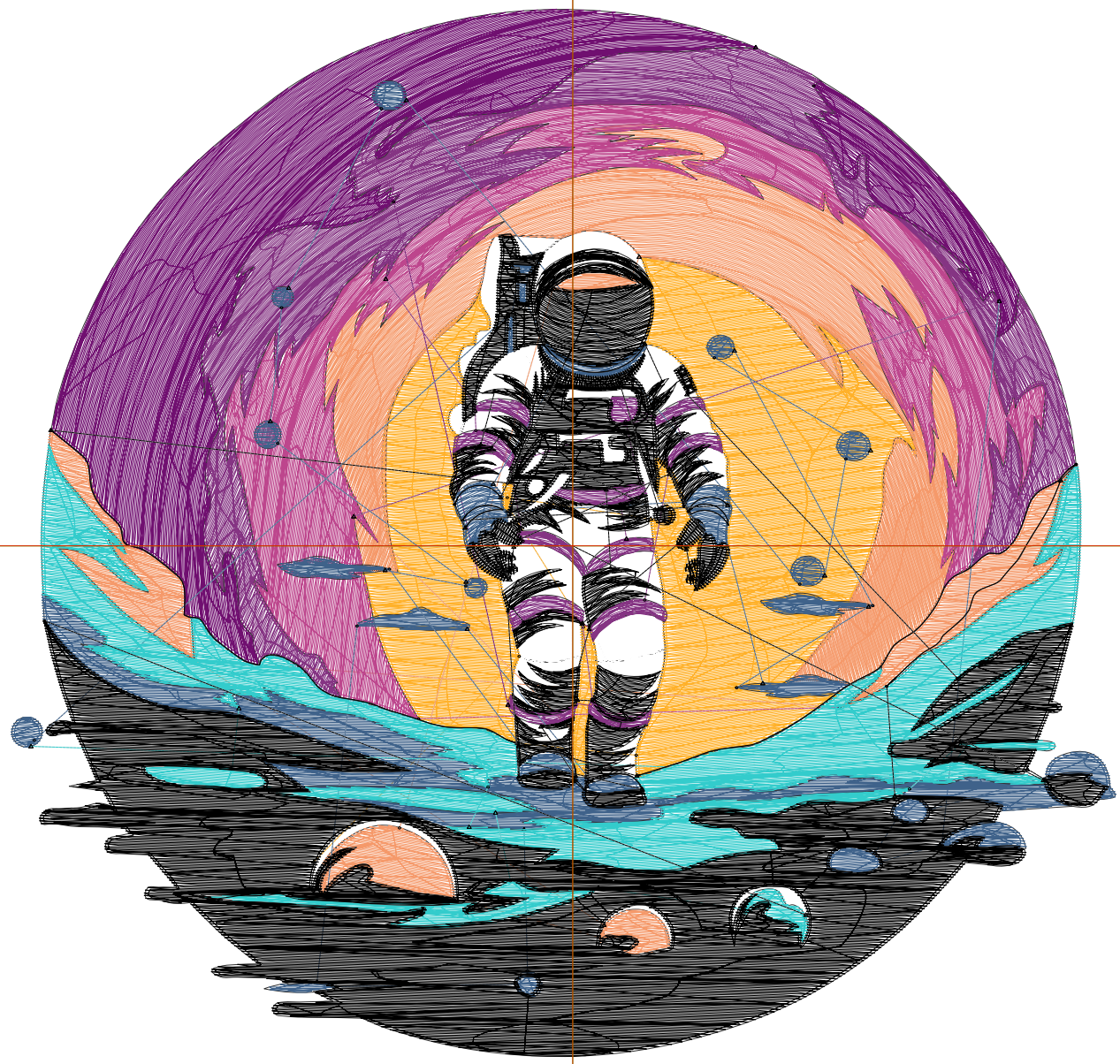
Wilcom EmbroideryStudio - Designing



Design: **6**

Title:

Stitches: 62,636
Height: 6.17 in
Width: 6.51 in
Colors: 9
Colorway: Colorway 1
Zoom: 1:1



Production Worksheet

Wilcom EmbroideryStudio - Designing



Design: **6**

Title:

Stitches: 62,636
 Height: 6.17 in
 Width: 6.51 in
 Colors: 9
 Colorway: Colorway 1
 Zoom: 1:1

Machine format: Tajima
 Color changes: 8
 Stops: 9
 Trims: 104
 Appliqués: 0
 Left: 84.1 mm
 Right: 81.3 mm
 Up: 80.3 mm
 Down: 76.4 mm
 EndX: 0.00 in
 EndY: 0.00 in
 Area 40.18 in²
 Max stitch: 10.7 mm
 Min stitch: 0.0 mm
 Max jump: 6.9 mm
 Total thread: 1086.86ft
 Total bobbin: 398.76ft

Stop Sequence:

#	N#	Color	St.	Code	Name	Chart
1.	9		5,262	9	White	Default
2.	7		5,803		R255 G177 B42	
3.	8		6,288		R245 G153 B106	
4.	6		6,445		R189 G70 B141	
5.	4		6,772		R133 G52 B131	
6.	2		6,221		R112 G15 B112	
7.	3		4,808		R63 G98 B138	
8.	5		5,461	5	Aqua	Default
9.	28		15,574	8	Black	Default

Production Worksheet

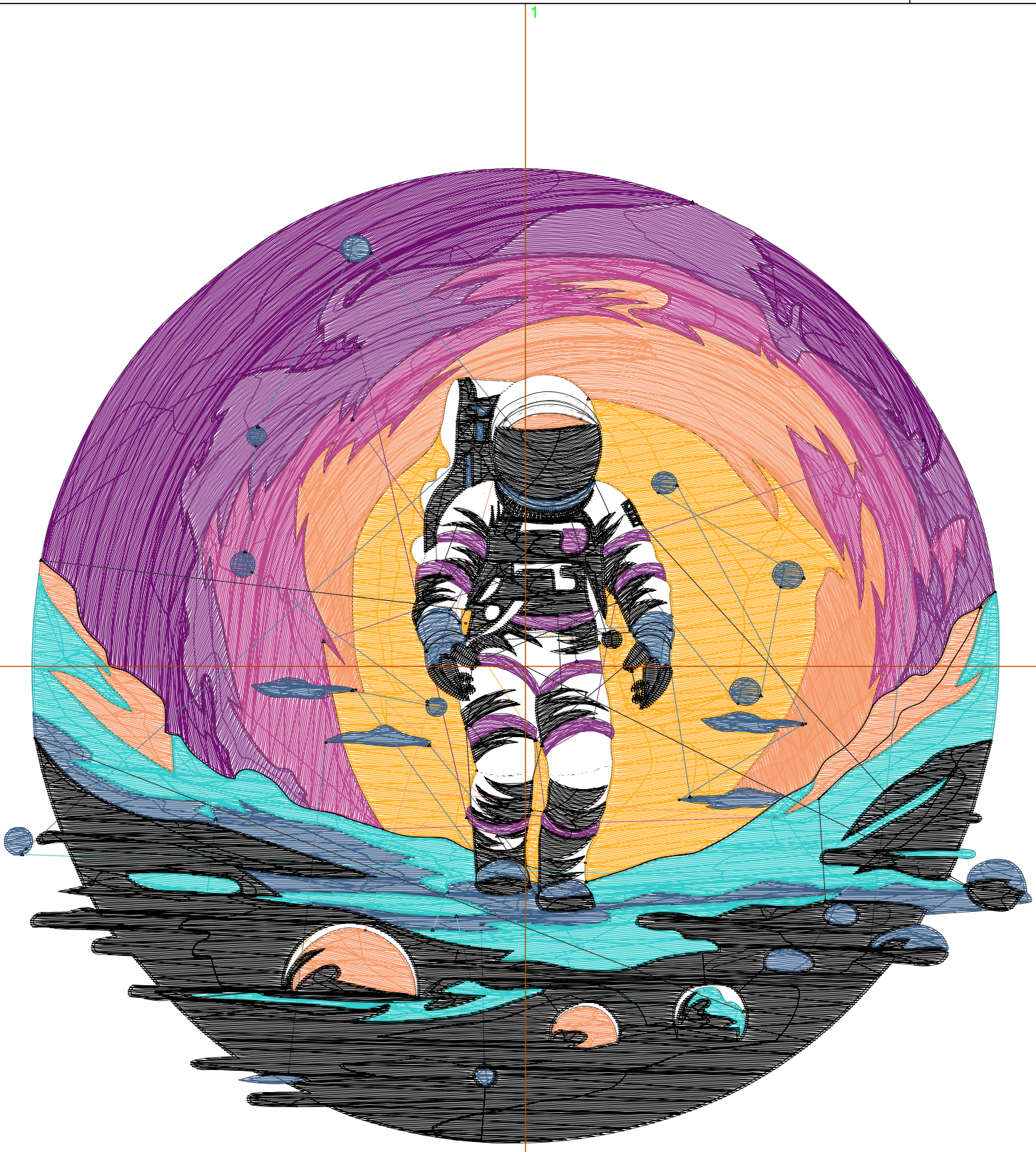
Wilcom EmbroideryStudio - Designing



Design: 7

Title:

Stitches: 77,055
Height: 7.12 in
Width: 7.51 in
Colors: 9
Colorway: Colorway 1
Zoom: 1:1



Production Worksheet

Wilcom EmbroideryStudio - Designing



Design: **7**

Title:

Stitches: 77,055
 Height: 7.12 in
 Width: 7.51 in
 Colors: 9
 Colorway: Colorway 1
 Zoom: 1:1

Machine format: Tajima
 Color changes: 8
 Stops: 9
 Trims: 107
 Appliqués: 0
 Left: 96.8 mm
 Right: 94.0 mm
 Up: 92.4 mm
 Down: 88.4 mm
 EndX: 0.00 in
 EndY: 0.00 in
 Area 53.48 in²
 Max stitch: 9.1 mm
 Min stitch: 0.0 mm
 Max jump: 7.0 mm
 Total thread: 1380.14ft
 Total bobbin: 516.49ft

Stop Sequence:

#	N#	Color	St.	Code	Name	Chart
1.	9		6,229	9	White	Default
2.	7		7,257		R255 G177 B42	
3.	8		9,389		R245 G153 B106	
4.	6		8,295		R189 G70 B141	
5.	4		6,952		R133 G52 B131	
6.	2		7,761		R112 G15 B112	
7.	3		5,822		R63 G98 B138	
8.	5		6,634	5	Aqua	Default
9.	28		18,714	8	Black	Default