

# Production Worksheet

Wilcom EmbroideryStudio - Designing



Design: **4**

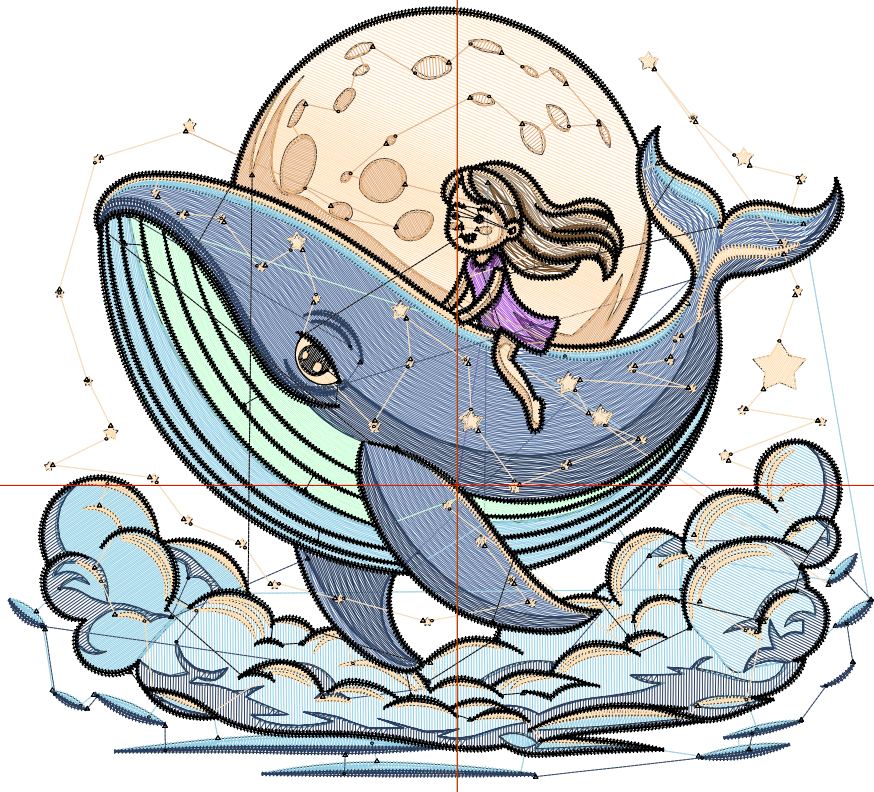
Title:

Stitches: 36,931  
 Height: 4.01 in  
 Width: 4.51 in  
 Colors: 11  
 Colorway: Colorway 1  
 Zoom: 1:1

Machine format: Tajima  
 Color changes: 10  
 Stops: 11  
 Trims: 183  
 Appliqués: 0  
 Left: 59.4 mm  
 Right: 55.1 mm  
 Up: 63.3 mm  
 Down: 38.6 mm  
 EndX: 0.00 in  
 EndY: 0.00 in  
 Area: 18.11 in<sup>2</sup>  
 Max stitch: 10.3 mm  
 Min stitch: 0.0 mm  
 Max jump: 6.9 mm  
 Total thread: 475.17ft  
 Total bobbin: 135.84ft

Stop Sequence:

#	N#	Color	St.	Code	Name	Chart
1.	12		193		R182 G98 B224	
2.	11		167		R106 G45 B125	
3.	9		447		R153 G125 B96	
4.	8		363		R120 G80 B40	
5.	7		3,080		R87 G114 B158	
6.	4		889		R197 G255 B212	
7.	1		6,013		R147 G208 B230	
8.	3		4,555		R42 G63 B97	
9.	2		8,044		R255 G222 B178	
10.	5		1,881		R227 G173 B123	
11.	28		11,297	8	Black	Default



# Production Worksheet

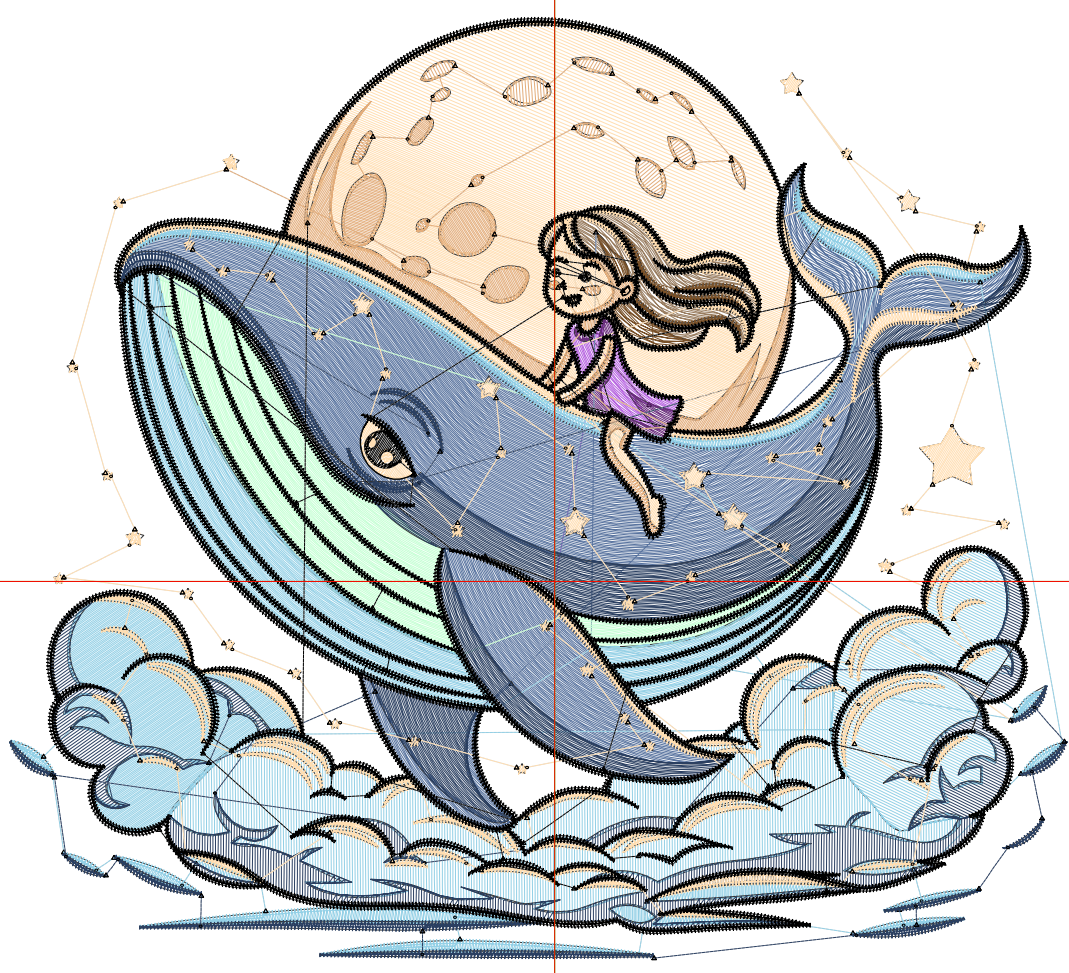
Wilcom EmbroideryStudio - Designing



Design: **5**

Title:

Stitches: 46,869  
Height: 4.90 in  
Width: 5.51 in  
Colors: 11  
Colorway: Colorway 1  
Zoom: 1:1



1

1

2

2

# Production Worksheet

Wilcom EmbroideryStudio - Designing



Design: **5**

Title:

Stitches: 46,869  
 Height: 4.90 in  
 Width: 5.51 in  
 Colors: 11  
 Colorway: Colorway 1  
 Zoom: 1:1

Machine format: Tajima  
 Color changes: 10  
 Stops: 11  
 Trims: 197  
 Appliqués: 0  
 Left: 72.1 mm  
 Right: 67.8 mm  
 Up: 74.6 mm  
 Down: 49.9 mm  
 EndX: 0.00 in  
 EndY: 0.00 in  
 Area 27.02 in<sup>2</sup>  
 Max stitch: 7.0 mm  
 Min stitch: 0.0 mm  
 Max jump: 7.0 mm  
 Total thread: 632.51ft  
 Total bobbin: 190.44ft

Stop Sequence:

#	N#	Color	St.	Code	Name	Chart
1.	12		258		R182 G98 B224	
2.	11		226		R106 G45 B125	
3.	9		567		R153 G125 B96	
4.	8		445		R120 G80 B40	
5.	7		4,292		R87 G114 B158	
6.	4		1,272		R197 G255 B212	
7.	1		7,891		R147 G208 B230	
8.	3		5,874		R42 G63 B97	
9.	2		10,025		R255 G222 B178	
10.	5		2,440		R227 G173 B123	
11.	28		13,577	8	Black	Default

# Production Worksheet

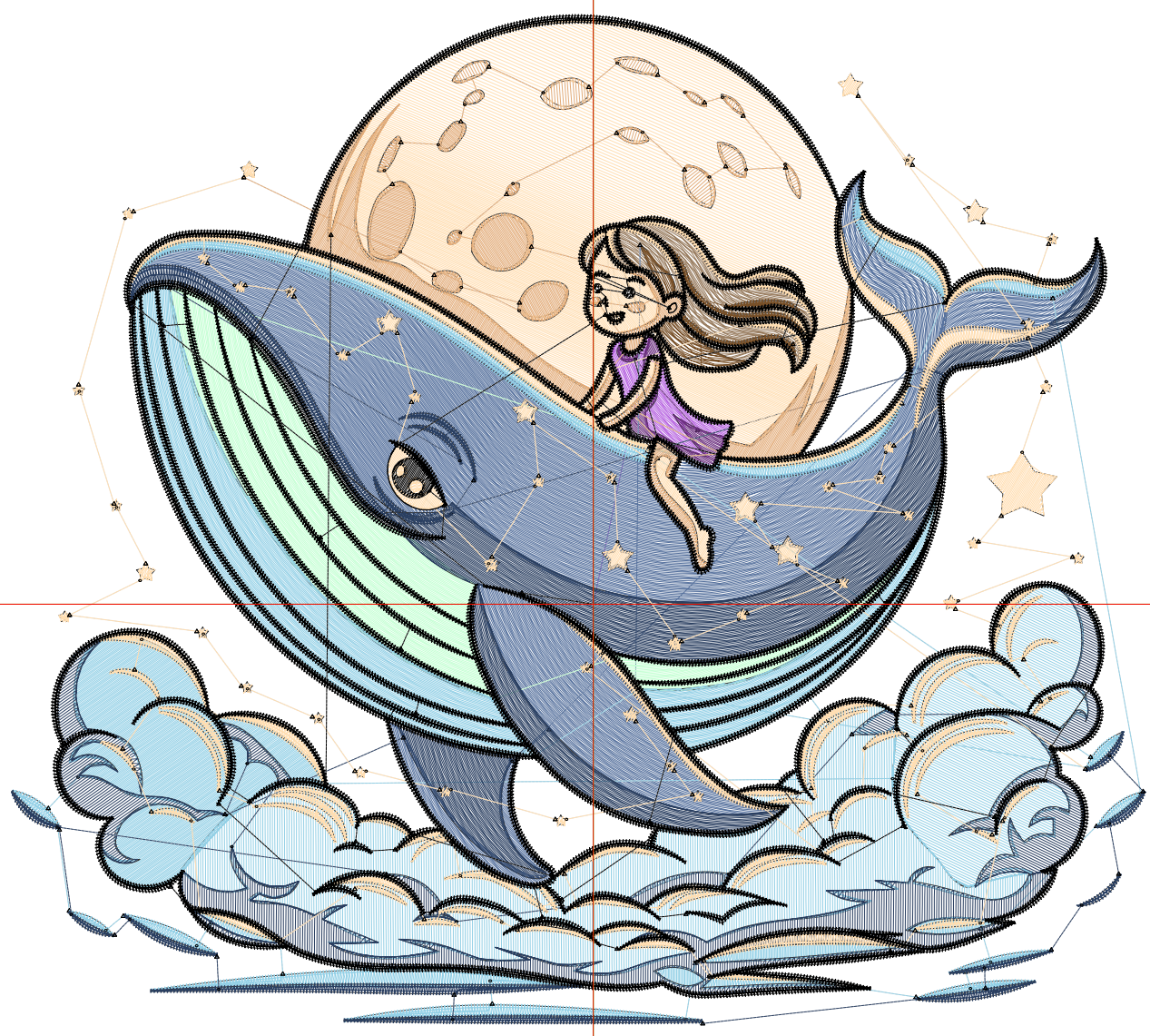
Wilcom EmbroideryStudio - Designing



Design: **6**

Title:

Stitches: 57,745  
Height: 5.79 in  
Width: 6.51 in  
Colors: 11  
Colorway: Colorway 1  
Zoom: 1:1



# Production Worksheet

Wilcom EmbroideryStudio - Designing



Design: **6**

Title:

Stitches: 57,745  
 Height: 5.79 in  
 Width: 6.51 in  
 Colors: 11  
 Colorway: Colorway 1  
 Zoom: 1:1

Machine format: Tajima  
 Color changes: 10  
 Stops: 11  
 Trims: 204  
 Appliqués: 0  
 Left: 84.8 mm  
 Right: 80.5 mm  
 Up: 85.9 mm  
 Down: 61.2 mm  
 EndX: 0.00 in  
 EndY: 0.00 in  
 Area 37.71 in<sup>2</sup>  
 Max stitch: 6.9 mm  
 Min stitch: 0.0 mm  
 Max jump: 6.9 mm  
 Total thread: 812.35ft  
 Total bobbin: 254.72ft

Stop Sequence:

#	N#	Color	St.	Code	Name	Chart
1.	12		298		R182 G98 B224	
2.	11		280		R106 G45 B125	
3.	9		753		R153 G125 B96	
4.	8		539		R120 G80 B40	
5.	7		5,722		R87 G114 B158	
6.	4		1,716		R197 G255 B212	
7.	1		10,063		R147 G208 B230	
8.	3		7,383		R42 G63 B97	
9.	2		12,149		R255 G222 B178	
10.	5		2,988		R227 G173 B123	
11.	28		15,852	8	Black	Default

# Production Worksheet

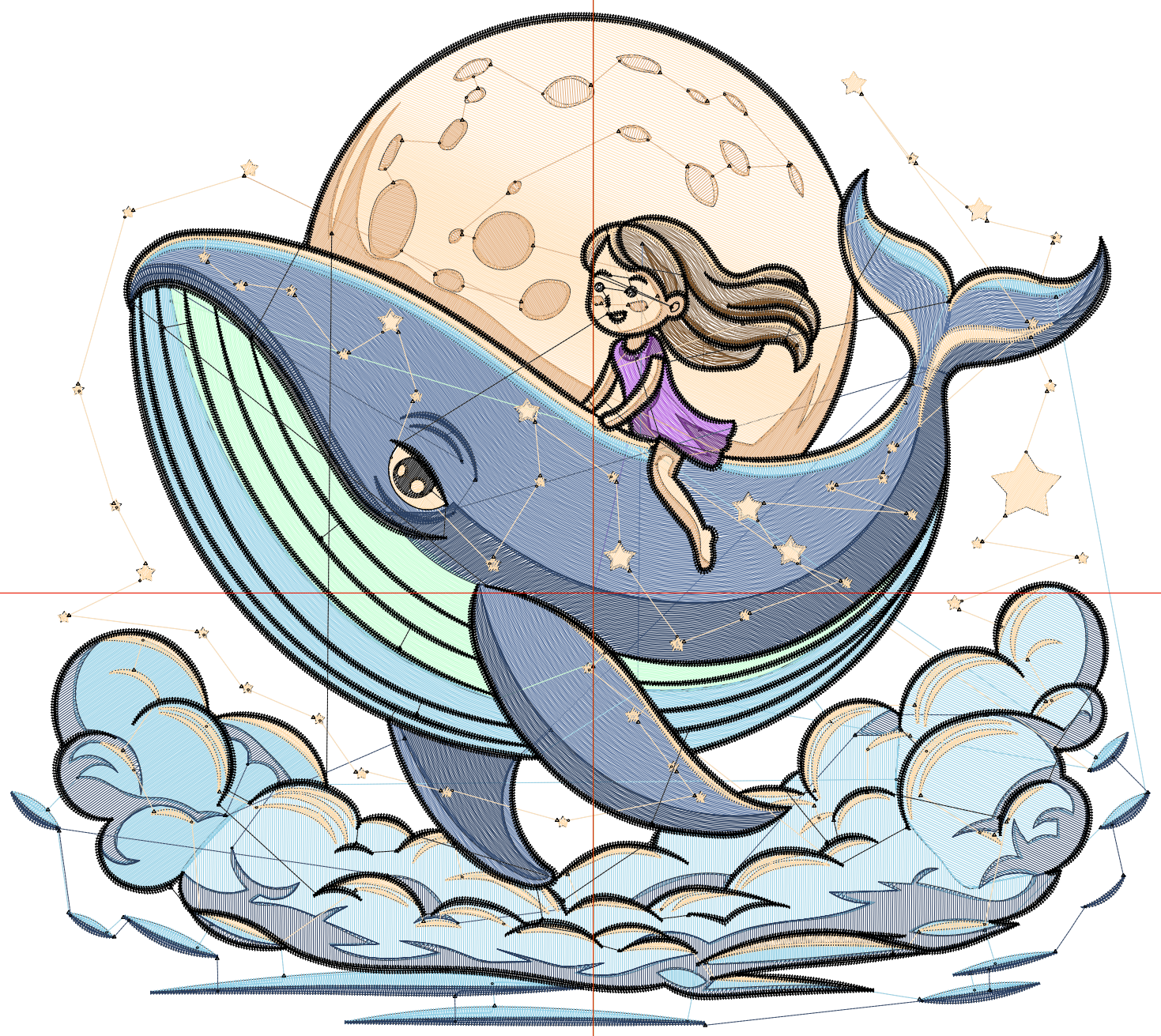
Wilcom EmbroideryStudio - Designing



Design: **7.50**

Title:

Stitches: 70,241  
Height: 6.68 in  
Width: 7.51 in  
Colors: 11  
Colorway: Colorway 1  
Zoom: 1:1



# Production Worksheet

Wilcom EmbroideryStudio - Designing



Design: **7.50**

Title:

Stitches: 70,241  
 Height: 6.68 in  
 Width: 7.51 in  
 Colors: 11  
 Colorway: Colorway 1  
 Zoom: 1:1

Machine format: Tajima  
 Color changes: 10  
 Stops: 11  
 Trims: 212  
 Appliqués: 0  
 Left: 97.5 mm  
 Right: 93.2 mm  
 Up: 97.2 mm  
 Down: 72.5 mm  
 EndX: 0.00 in  
 EndY: 0.00 in  
 Area 50.18 in<sup>2</sup>  
 Max stitch: 7.3 mm  
 Min stitch: 0.0 mm  
 Max jump: 7.0 mm  
 Total thread: 1018.07ft  
 Total bobbin: 328.04ft

Stop Sequence:

#	N#	Color	St.	Code	Name	Chart
1.	12		390		R182 G98 B224	
2.	11		321		R106 G45 B125	
3.	9		921		R153 G125 B96	
4.	8		612		R120 G80 B40	
5.	7		7,411		R87 G114 B158	
6.	4		2,208		R197 G255 B212	
7.	1		12,273		R147 G208 B230	
8.	3		10,054		R42 G63 B97	
9.	2		14,376		R255 G222 B178	
10.	5		3,529		R227 G173 B123	
11.	28		18,144	8	Black	Default

# Production Worksheet

Wilcom EmbroideryStudio - Designing

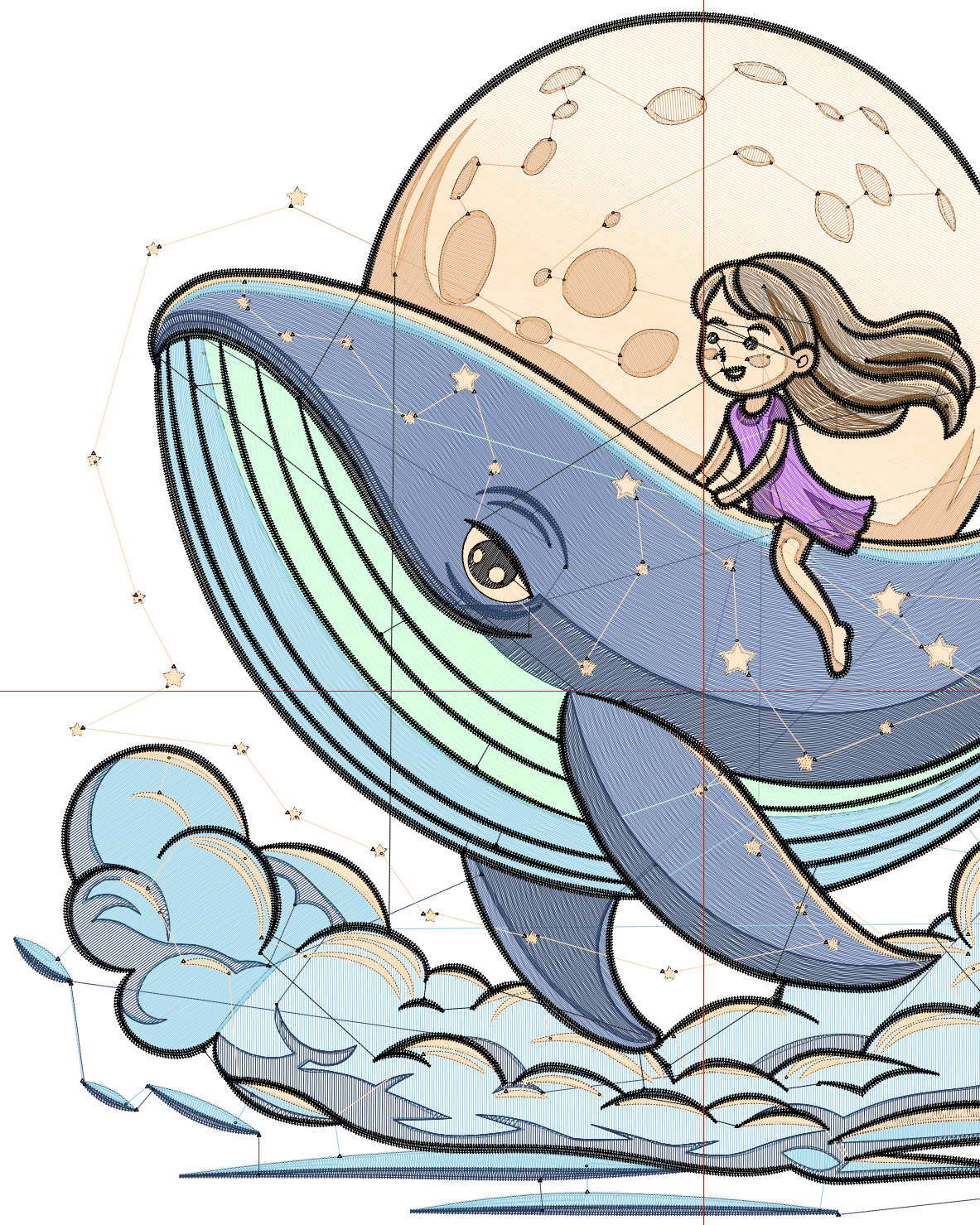


Design: 8

Title:

Stitches: 82,966  
Height: 7.57 in  
Width: 8.51 in  
Colors: 11  
Colorway: Colorway 1  
Zoom: 1:1

1 1  
1 1



2 2  
2 2

# Production Worksheet

Wilcom EmbroideryStudio - Designing

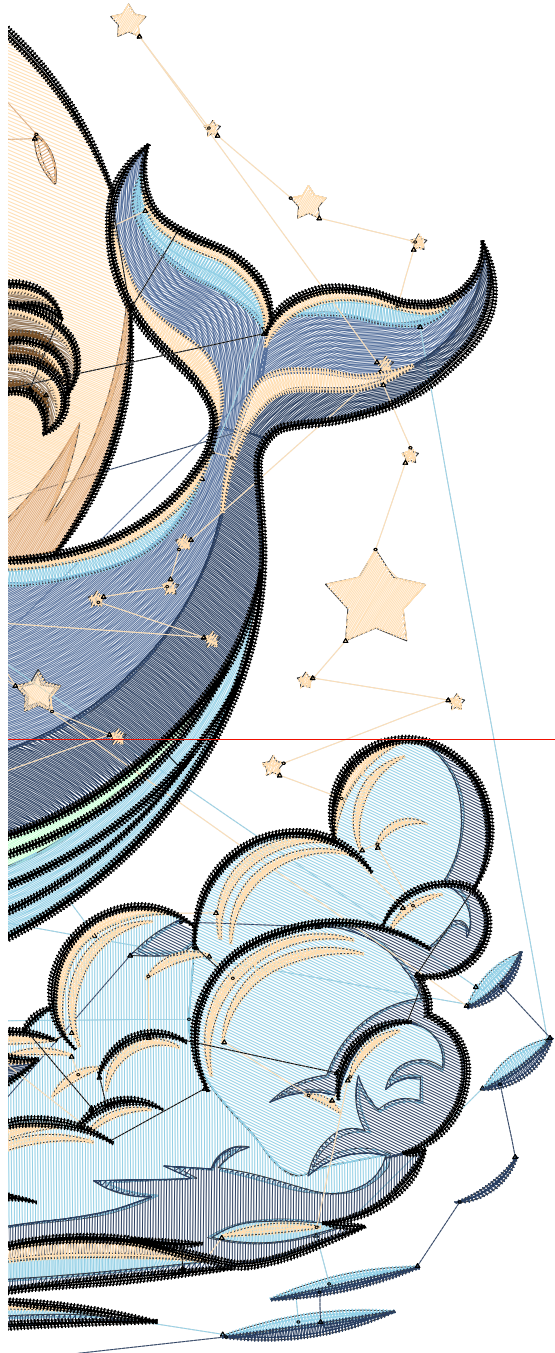


Design: **8**

Title:

Stitches: 82,966  
 Height: 7.57 in  
 Width: 8.51 in  
 Colors: 11  
 Colorway: Colorway 1  
 Zoom: 1:1

1 1  
 1 1



Machine format: Tajima  
 Color changes: 10  
 Stops: 11  
 Trims: 216  
 Appliqués: 0  
 Left: 110.2 mm  
 Right: 105.9 mm  
 Up: 108.5 mm  
 Down: 83.8 mm  
 EndX: 0.00 in  
 EndY: 0.00 in  
 Area: 64.43 in<sup>2</sup>  
 Max stitch: 8.3 mm  
 Min stitch: 0.0 mm  
 Max jump: 7.0 mm  
 Total thread: 1242.13ft  
 Total bobbin: 411.33ft

Stop Sequence:

#	N#	Color	St.	Code	Name	Chart
1.	12		454		R182 G98 B224	
2.	11		384		R106 G45 B125	
3.	9		1,100		R153 G125 B96	
4.	8		727		R120 G80 B40	
5.	7		9,235		R87 G114 B158	
6.	4		2,862		R197 G255 B212	
7.	1		14,864		R147 G208 B230	
8.	3		12,171		R42 G63 B97	
9.	2		16,514		R255 G222 B178	
10.	5		4,150		R227 G173 B123	
11.	28		20,503	8	Black	Default

2 2  
 2 2

# Production Worksheet

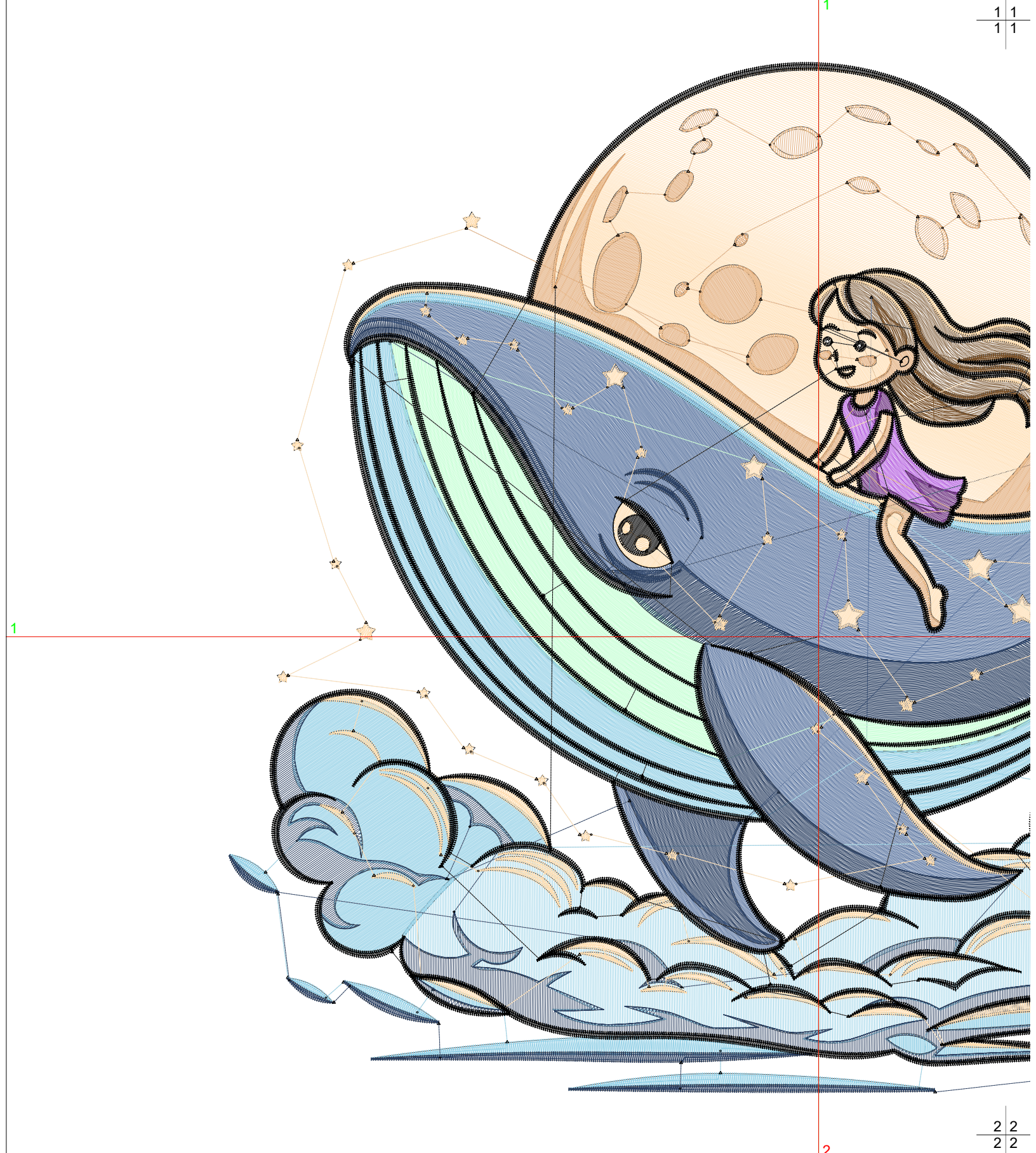
Wilcom EmbroideryStudio - Designing



Design: 9

Title:

Stitches: 96,334  
Height: 8.46 in  
Width: 9.51 in  
Colors: 11  
Colorway: Colorway 1  
Zoom: 1:1



# Production Worksheet

Wilcom EmbroideryStudio - Designing

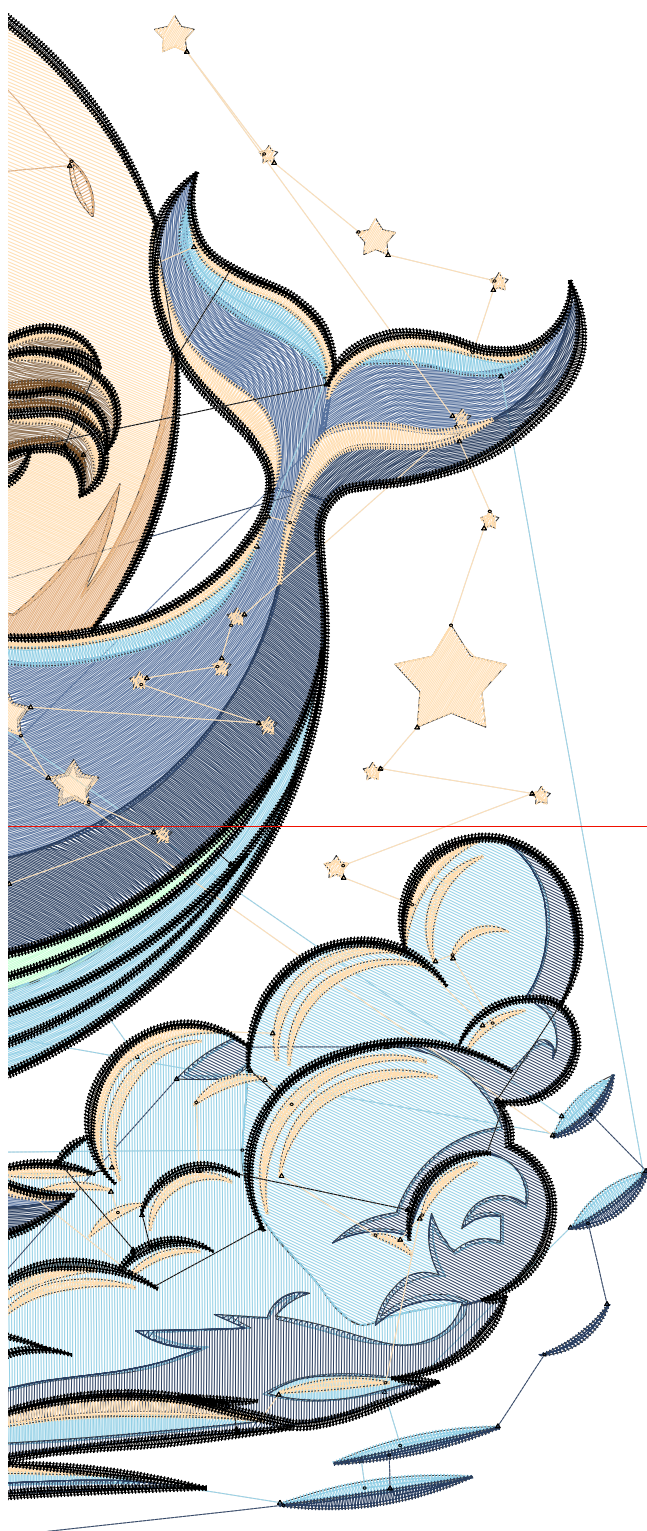


Design: **9**

Title:

Stitches: 96,334  
 Height: 8.46 in  
 Width: 9.51 in  
 Colors: 11  
 Colorway: Colorway 1  
 Zoom: 1:1

1 1  
 1 1



Machine format: Tajima  
 Color changes: 10  
 Stops: 11  
 Trims: 218  
 Appliqués: 0  
 Left: 122.9 mm  
 Right: 118.6 mm  
 Up: 119.8 mm  
 Down: 95.1 mm  
 EndX: 0.00 in  
 EndY: 0.00 in  
 Area: 80.46 in<sup>2</sup>  
 Max stitch: 9.3 mm  
 Min stitch: 0.0 mm  
 Max jump: 7.0 mm  
 Total thread: 1483.00ft  
 Total bobbin: 502.09ft

Stop Sequence:

#	N#	Color	St.	Code	Name	Chart
1.	12		520		R182 G98 B224	
2.	11		467		R106 G45 B125	
3.	9		1,296		R153 G125 B96	
4.	8		814		R120 G80 B40	
5.	7		11,463		R87 G114 B158	
6.	4		3,407		R197 G255 B212	
7.	1		17,612		R147 G208 B230	
8.	3		14,332		R42 G63 B97	
9.	2		18,678		R255 G222 B178	
10.	5		4,862		R227 G173 B123	
11.	28		22,881	8	Black	Default

2 2  
 2 2

# Production Worksheet

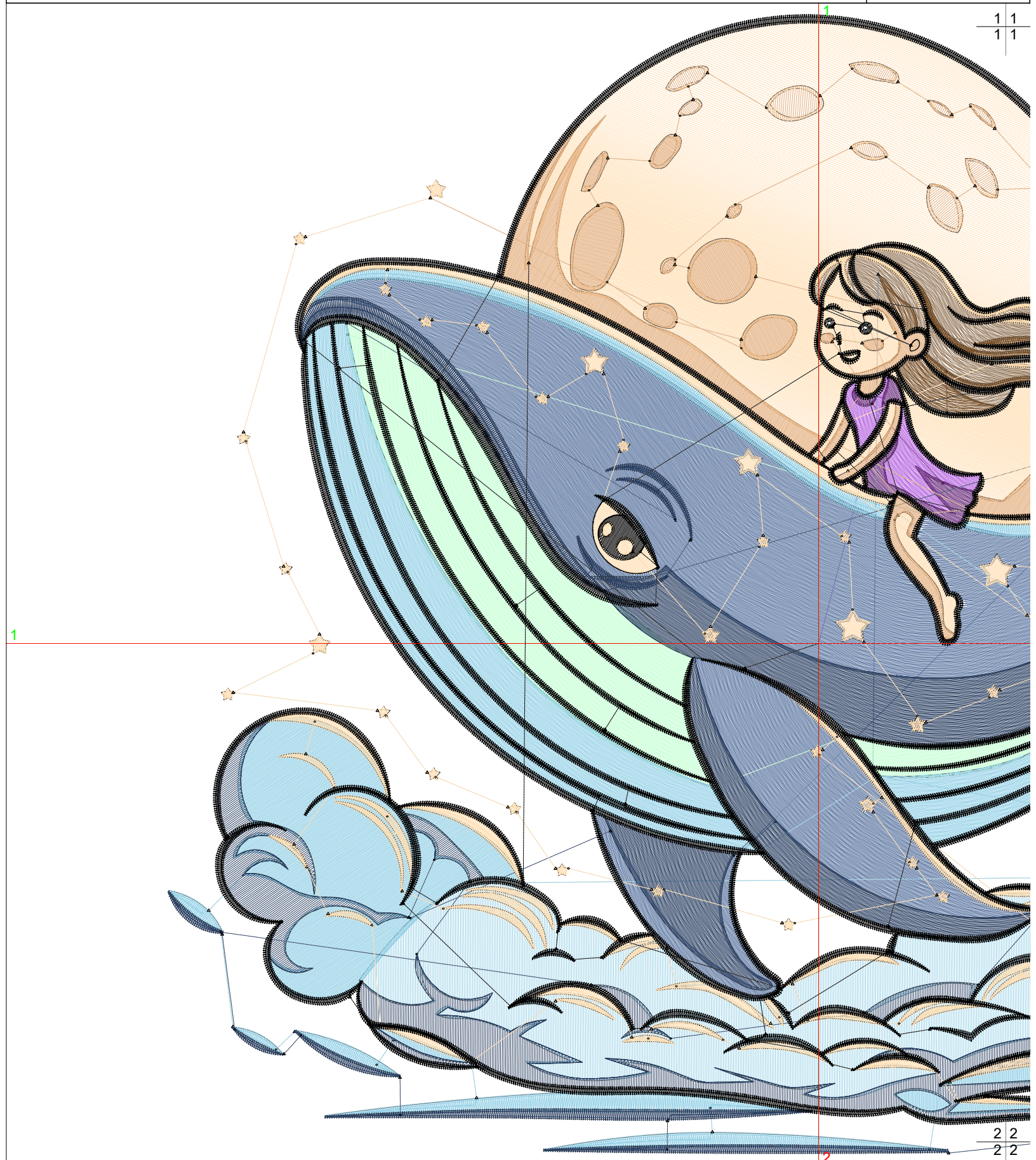
Wilcom EmbroideryStudio - Designing



Design: **10**

Title:

Stitches: 108,071  
Height: 9.35 in  
Width: 10.51 in  
Colors: 11  
Colorway: Colorway 1  
Zoom: 1:1



# Production Worksheet

Wilcom EmbroideryStudio - Designing

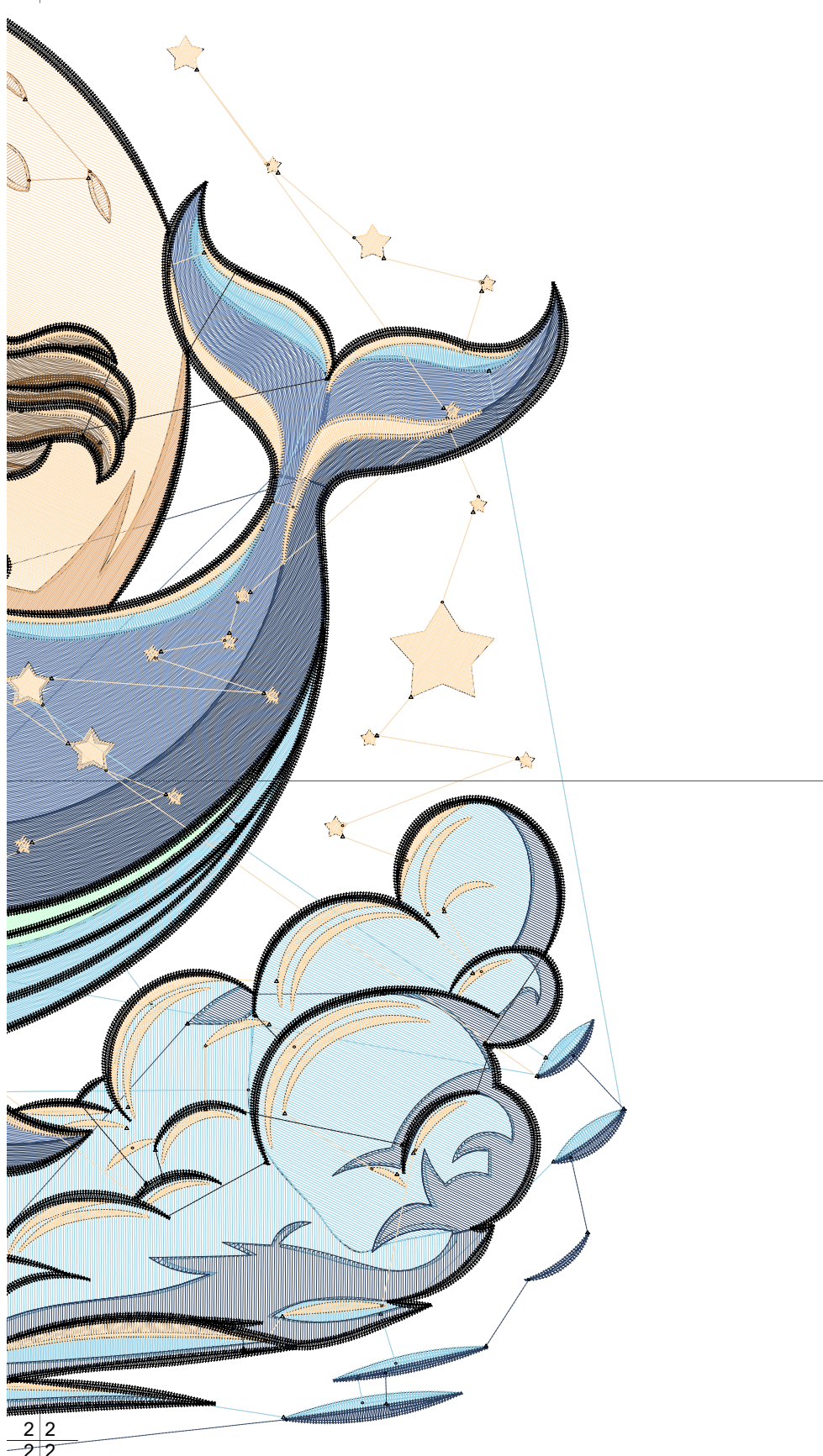


Design: **10**

Title:

Stitches: 108,071  
 Height: 9.35 in  
 Width: 10.51 in  
 Colors: 11  
 Colorway: Colorway 1  
 Zoom: 1:1

1 1  
1 1



2 2  
2 2

Machine format: Tajima  
 Color changes: 10  
 Stops: 11  
 Trims: 222  
 Appliqués: 0  
 Left: 135.6 mm  
 Right: 131.3 mm  
 Up: 131.1 mm  
 Down: 106.4 mm  
 EndX: 0.00 in  
 EndY: 0.00 in  
 Area: 98.26 in<sup>2</sup>  
 Max stitch: 10.3 mm  
 Min stitch: 0.0 mm  
 Max jump: 7.0 mm  
 Total thread: 1728.58ft  
 Total bobbin: 601.98ft

Stop Sequence:

#	N#	Color	St.	Code	Name	Chart
1.	12		605		R182 G98 B224	
2.	11		524		R106 G45 B125	
3.	9		1,497		R153 G125 B96	
4.	8		892		R120 G80 B40	
5.	7		13,731		R87 G114 B158	
6.	4		4,188		R197 G255 B212	
7.	1		20,362		R147 G208 B230	
8.	3		14,300		R42 G63 B97	
9.	2		21,175		R255 G222 B178	
10.	5		5,515		R227 G173 B123	
11.	28		25,280	8	Black	Default