

Production Worksheet

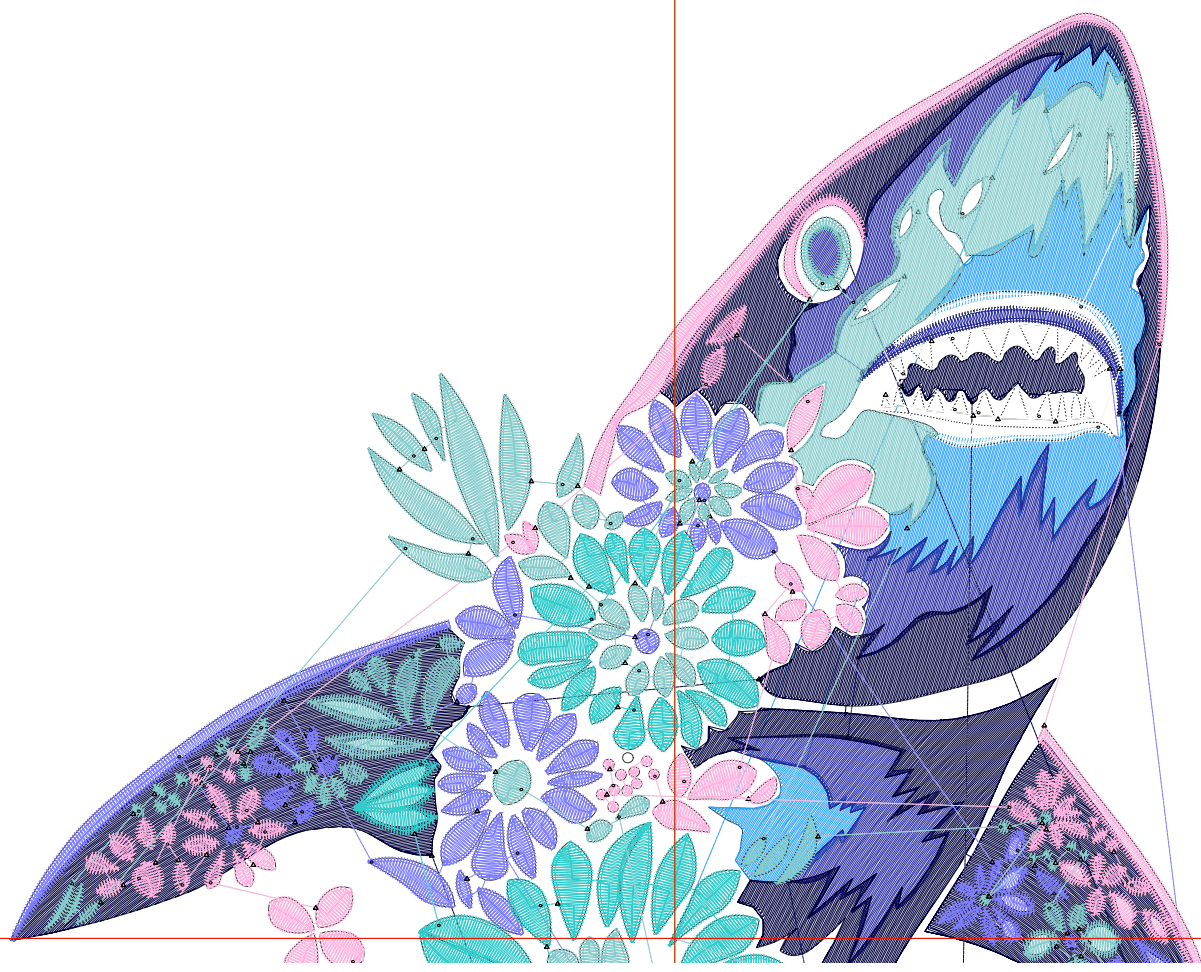
Wilcom EmbroideryStudio - Designing



Design: **10**

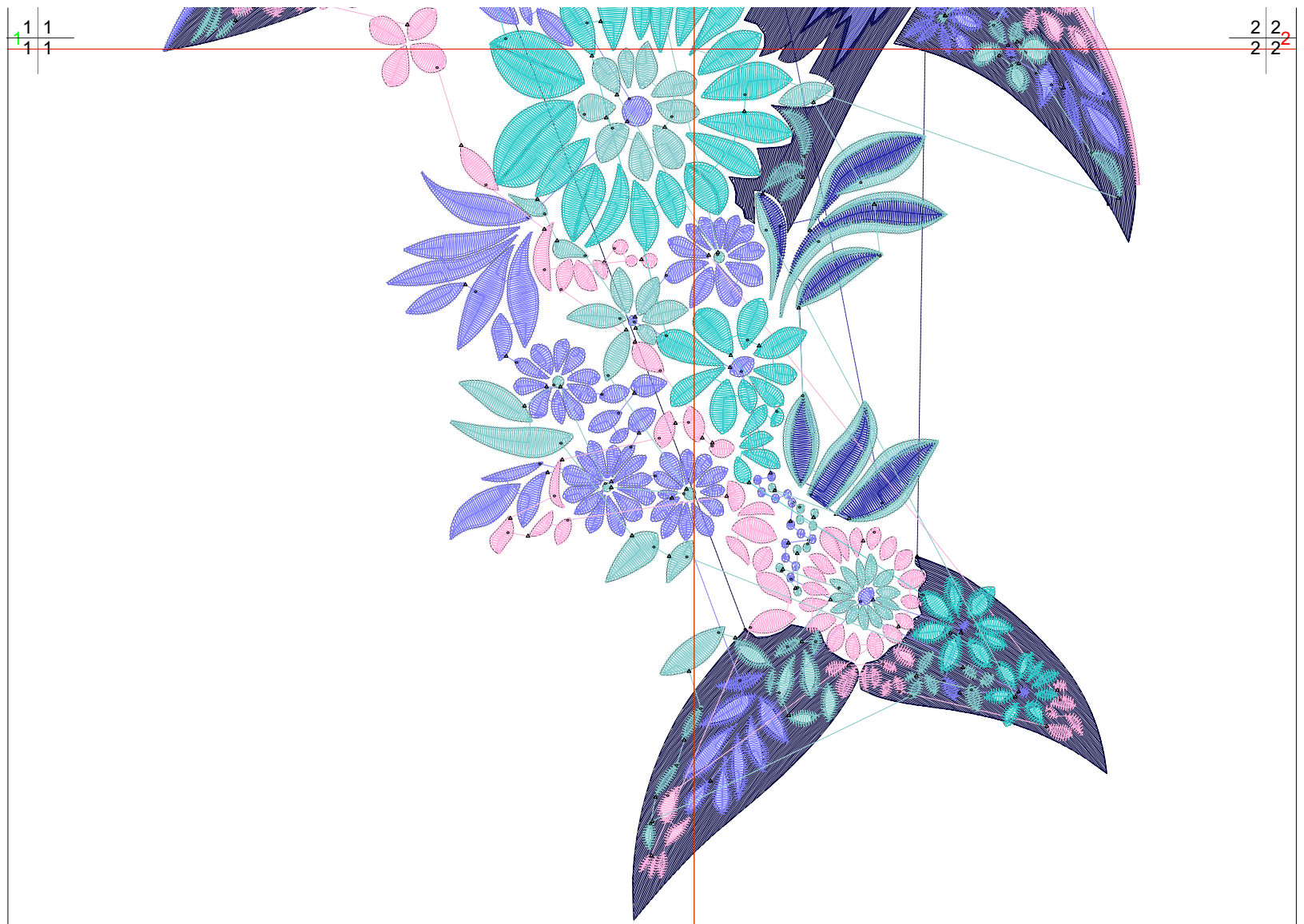
Title:

Stitches: 52,685
Height: 10.50 in
Width: 6.37 in
Colors: 8
Colorway: Colorway 1
Zoom: 1:1



1 1
4 1

2 2
2 2



1 1
1 1

2 2
2 2

2

Production Worksheet

Wilcom EmbroideryStudio - Designing



Design: **10**

Title:

Stitches: 52,685
 Height: 10.50 in
 Width: 6.37 in
 Colors: 8
 Colorway: Colorway 1
 Zoom: 1:1

Machine format: Tajima
 Color changes: 7
 Stops: 8
 Trims: 188
 Appliqués: 0
 Left: 88.0 mm
 Right: 73.9 mm
 Up: 122.5 mm
 Down: 144.3 mm
 EndX: 0.00 in
 EndY: 0.00 in
 Area 66.93 in²
 Max stitch: 10.2 mm
 Min stitch: 0.0 mm
 Max jump: 7.0 mm
 Total thread: 803.86ft
 Total bobbin: 269.95ft

Stop Sequence:

#	N#	Color	St.	Code	Name	Chart
1.	5		2,281		R44 G164 B255	
2.	2		3,981		R39 G43 B161	
3.	1		12,107		R0 G0 B61	
4.	9		1,521	9	White	Default
5.	20		8,887	20	Powder Blue	Default
6.	6		7,247		R255 G178 B223	
7.	25		5,582	5	Aqua	Default
8.	3		11,077		R132 G203 B204	

Production Worksheet

Wilcom EmbroideryStudio - Designing



Design: **5**

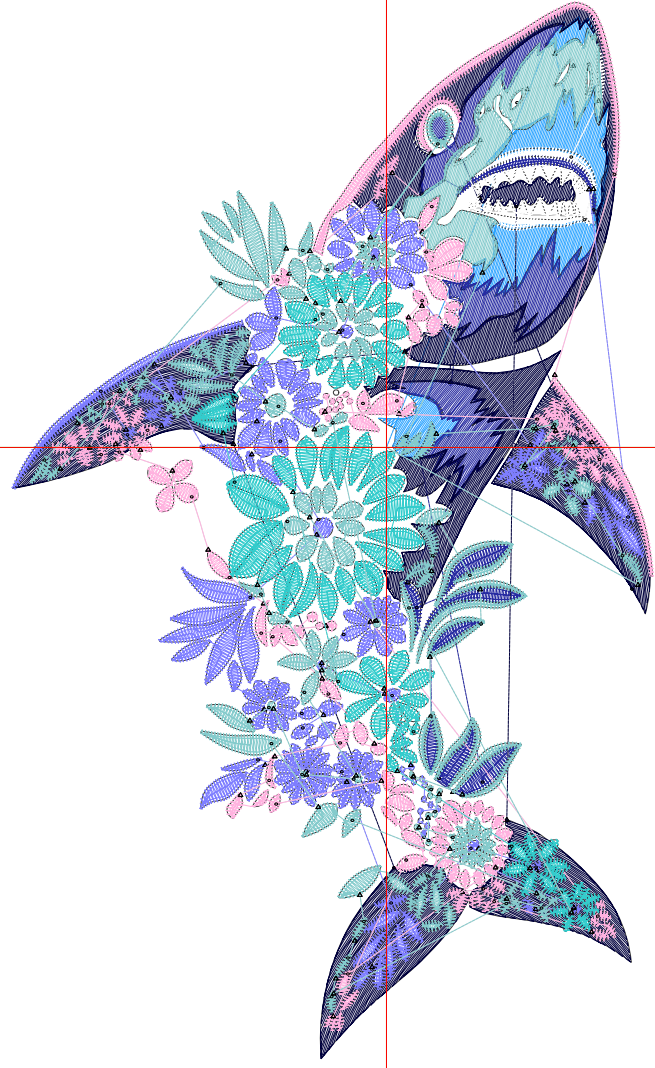
Title:

Stitches: 26,471
Height: 5.51 in
Width: 3.34 in
Colors: 8
Colorway: Colorway 1
Zoom: 1:1

Machine format: Tajima
Color changes: 7
Stops: 8
Trims: 128
Appliqués: 0
Left: 49.6 mm
Right: 35.4 mm
Up: 59.0 mm
Down: 80.8 mm
EndX: 0.00 in
EndY: 0.00 in
Area 18.41 in²
Max stitch: 6.9 mm
Min stitch: 0.0 mm
Max jump: 6.9 mm
Total thread: 323.58ft
Total bobbin: 87.26ft

Stop Sequence:

#	N#	Color	St.	Code	Name	Chart
1.	5		911		R44 G164 B255	
2.	2		1,779		R39 G43 B161	
3.	1		4,585		R0 G0 B61	
4.	9		866	9	White	Default
5.	20		5,057	20	Powder Blue	Default
6.	6		4,139		R255 G178 B223	
7.	25		3,130	5	Aqua	Default
8.	3		6,002		R132 G203 B204	



Production Worksheet

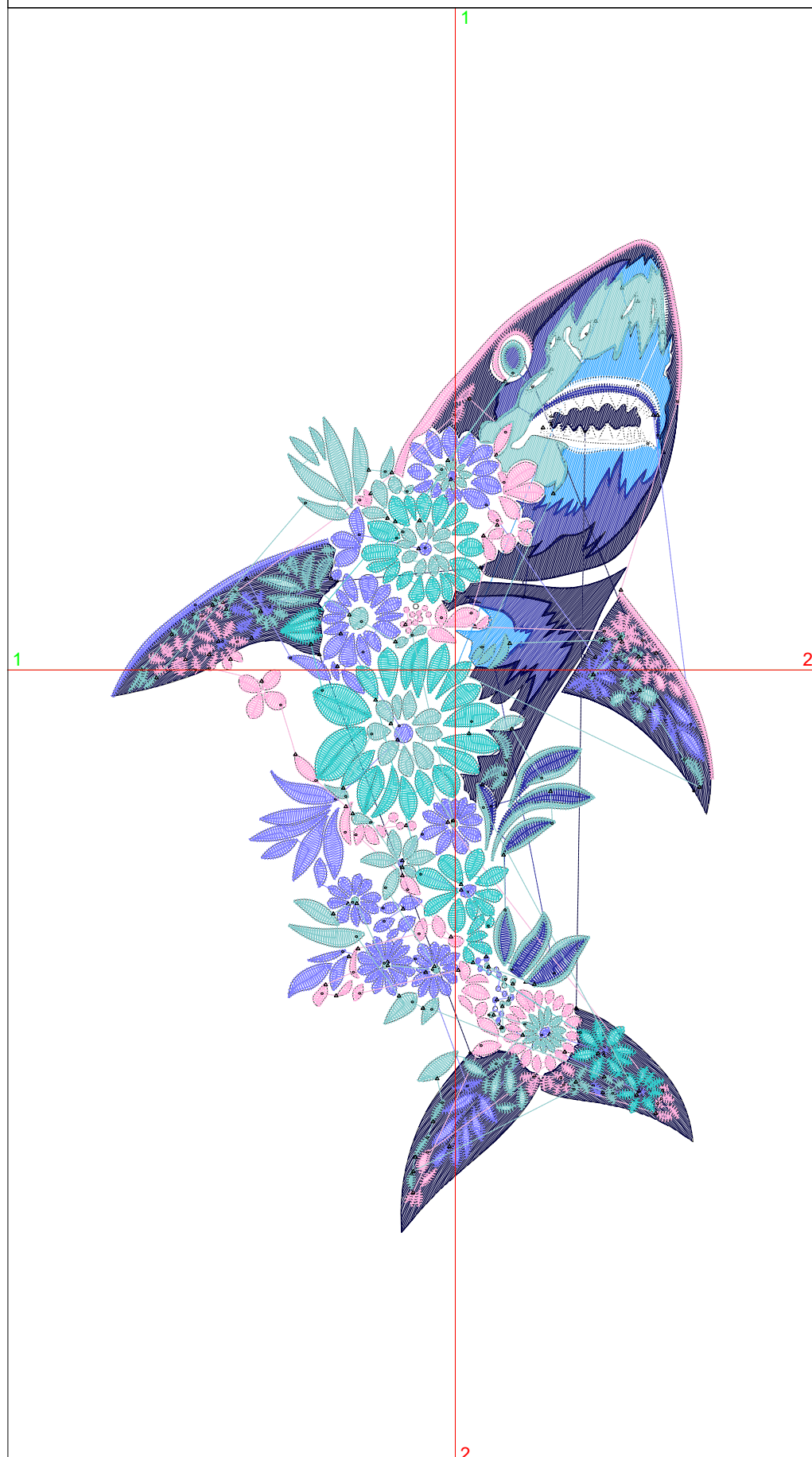
Wilcom EmbroideryStudio - Designing



Design: **6**

Title:

Stitches: 31,180
Height: 6.51 in
Width: 3.95 in
Colors: 8
Colorway: Colorway 1
Zoom: 1:1



Machine format: Tajima
Color changes: 7
Stops: 8
Trims: 137
Appliqués: 0
Left: 57.3 mm
Right: 43.1 mm
Up: 71.7 mm
Down: 93.6 mm
EndX: 0.00 in
EndY: 0.00 in
Area: 25.70 in²
Max stitch: 6.9 mm
Min stitch: 0.0 mm
Max jump: 6.9 mm
Total thread: 401.45ft
Total bobbin: 115.10ft

Stop Sequence:

#	N#	Color	St.	Code	Name	Chart
1.	5		1,107		R44 G164 B255	
2.	2		2,173		R39 G43 B161	
3.	1		5,797		R0 G0 B61	
4.	9		1,008	9	White	Default
5.	20		5,767	20	Powder Blue	Default
6.	6		4,751		R255 G178 B223	
7.	25		3,610	5	Aqua	Default
8.	3		6,965		R132 G203 B204	

Production Worksheet

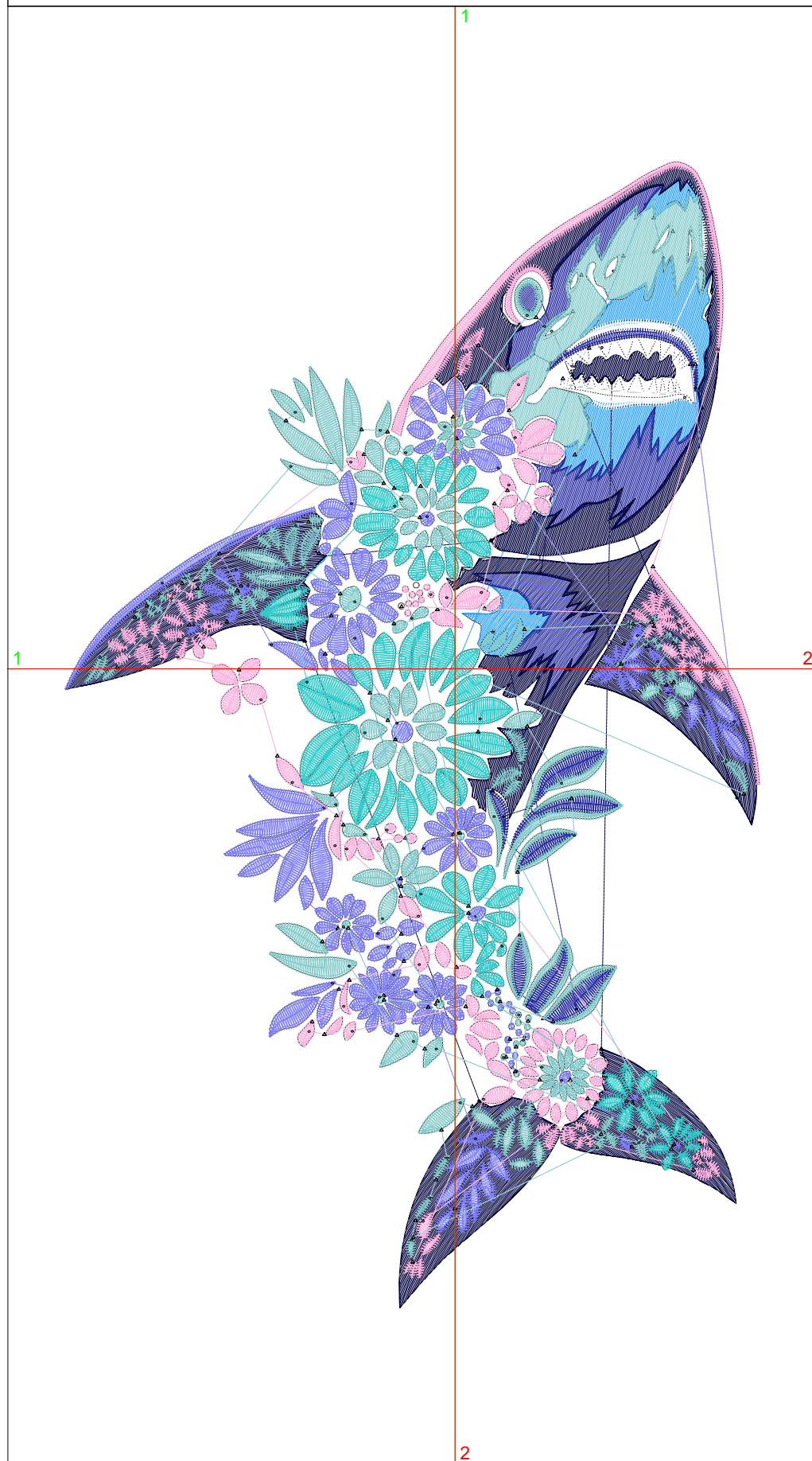
Wilcom EmbroideryStudio - Designing



Design: **7**

Title:

Stitches: 36,204
 Height: 7.51 in
 Width: 4.56 in
 Colors: 8
 Colorway: Colorway 1
 Zoom: 1:1



Machine format: Tajima
 Color changes: 7
 Stops: 8
 Trims: 148
 Appliqués: 0
 Left: 64.9 mm
 Right: 50.8 mm
 Up: 84.4 mm
 Down: 106.3 mm
 EndX: 0.00 in
 EndY: 0.00 in
 Area: 34.19 in²
 Max stitch: 7.1 mm
 Min stitch: 0.0 mm
 Max jump: 7.0 mm
 Total thread: 489.28ft
 Total bobbin: 147.61ft

Stop Sequence:

#	N#	Color	St.	Code	Name	Chart
1.	5		1,350		R44 G164 B255	
2.	2		2,586		R39 G43 B161	
3.	1		7,192		R0 G0 B61	
4.	9		1,118	9	White	Default
5.	20		6,530	20	Powder Blue	Default
6.	6		5,347		R255 G178 B223	
7.	25		4,093	5	Aqua	Default
8.	3		7,986		R132 G203 B204	

Production Worksheet

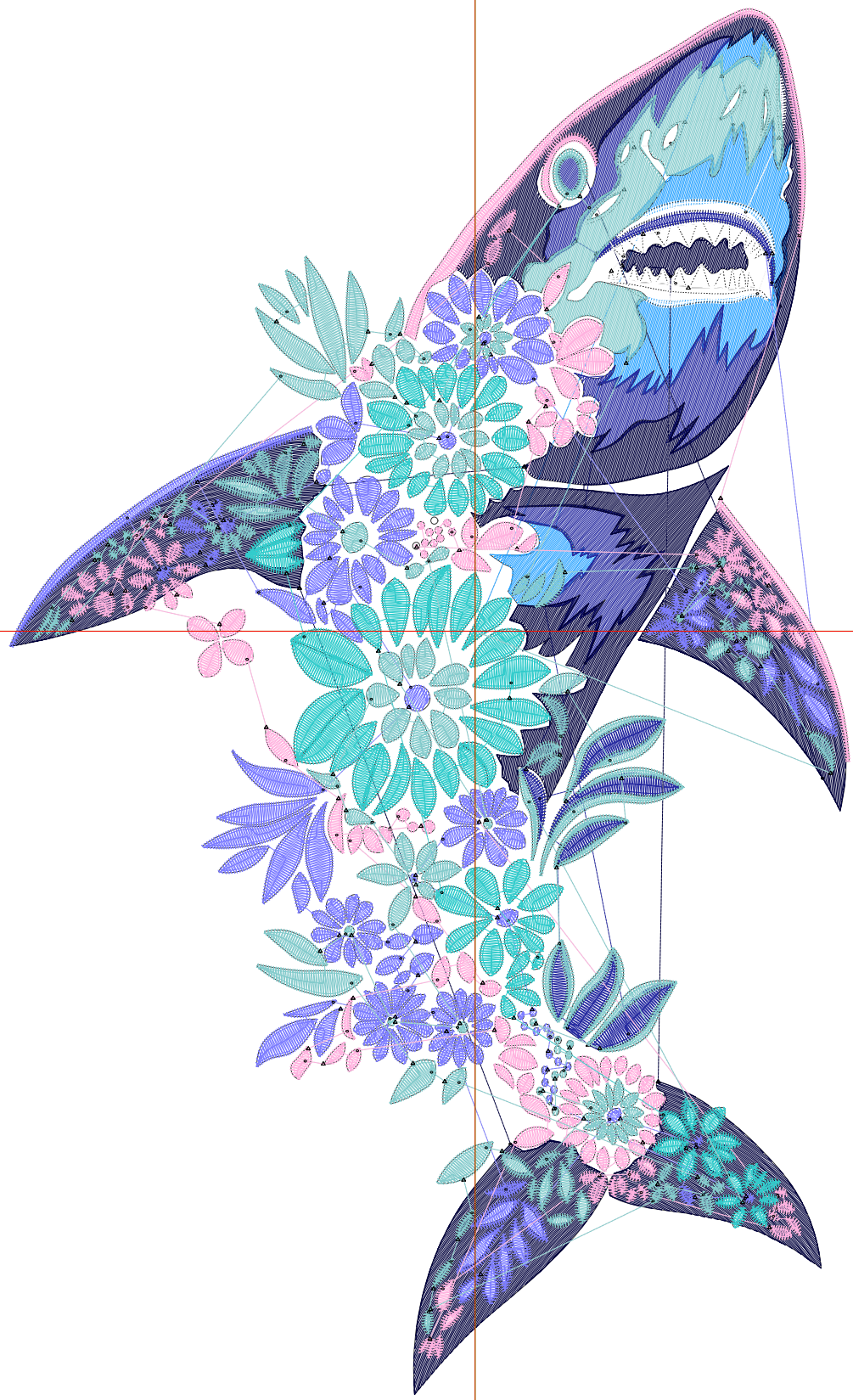
Wilcom EmbroideryStudio - Designing



Design: **8**

Title:

Stitches: 41,433
Height: 8.51 in
Width: 5.16 in
Colors: 8
Colorway: Colorway 1
Zoom: 1:1



Production Worksheet

Wilcom EmbroideryStudio - Designing



Design: **8**

Title:

Stitches: 41,433
 Height: 8.51 in
 Width: 5.16 in
 Colors: 8
 Colorway: Colorway 1
 Zoom: 1:1

Machine format: Tajima
 Color changes: 7
 Stops: 8
 Trims: 157
 Appliqués: 0
 Left: 72.6 mm
 Right: 58.5 mm
 Up: 97.1 mm
 Down: 118.9 mm
 EndX: 0.00 in
 EndY: 0.00 in
 Area 43.90 in²
 Max stitch: 7.9 mm
 Min stitch: 0.0 mm
 Max jump: 7.0 mm
 Total thread: 584.45ft
 Total bobbin: 183.68ft

Stop Sequence:

#	N#	Color	St.	Code	Name	Chart
1.	5		1,619		R44 G164 B255	
2.	2		3,010		R39 G43 B161	
3.	1		8,655		R0 G0 B61	
4.	9		1,267	9	White	Default
5.	20		7,303	20	Powder Blue	Default
6.	6		6,009		R255 G178 B223	
7.	25		4,567	5	Aqua	Default
8.	3		9,001		R132 G203 B204	

Production Worksheet

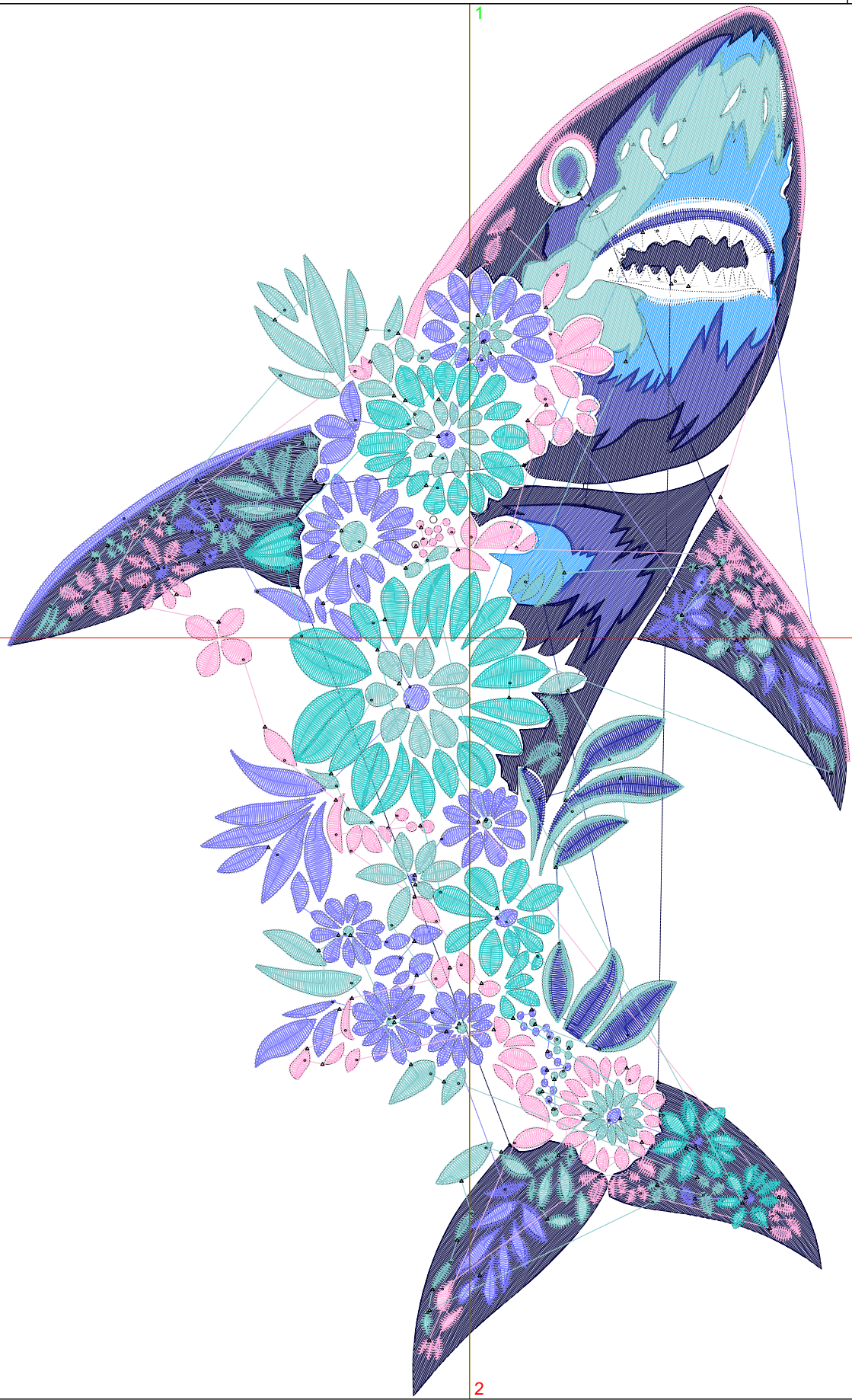
Wilcom EmbroideryStudio - Designing



Design: **9**

Title:

Stitches: 46,935
Height: 9.50 in
Width: 5.77 in
Colors: 8
Colorway: Colorway 1
Zoom: 1:1



Production Worksheet

Wilcom EmbroideryStudio - Designing



Design: **9**

Title:

Stitches: 46,935
 Height: 9.50 in
 Width: 5.77 in
 Colors: 8
 Colorway: Colorway 1
 Zoom: 1:1

Machine format: Tajima
 Color changes: 7
 Stops: 8
 Trims: 174
 Appliqués: 0
 Left: 80.3 mm
 Right: 66.2 mm
 Up: 109.8 mm
 Down: 131.6 mm
 EndX: 0.00 in
 EndY: 0.00 in
 Area 54.80 in²
 Max stitch: 9.0 mm
 Min stitch: 0.0 mm
 Max jump: 7.0 mm
 Total thread: 689.51ft
 Total bobbin: 224.54ft

Stop Sequence:

#	N#	Color	St.	Code	Name	Chart
1.	5		1,911		R44 G164 B255	
2.	2		3,501		R39 G43 B161	
3.	1		10,285		R0 G0 B61	
4.	9		1,389	9	White	Default
5.	20		8,130	20	Powder Blue	Default
6.	6		6,614		R255 G178 B223	
7.	25		5,077	5	Aqua	Default
8.	3		10,026		R132 G203 B204	