

Production Worksheet

Wilcom EmbroideryStudio - Designing



Design: **3**

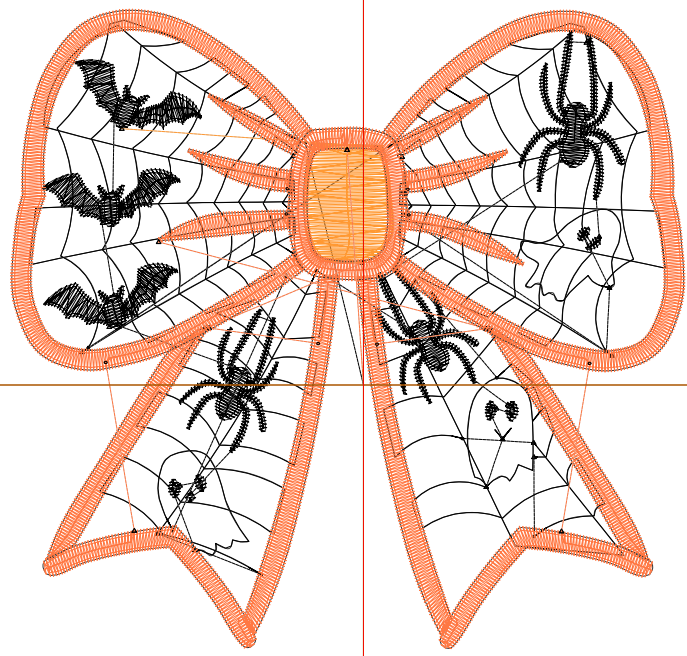
Title:

Stitches: 8,550
 Height: 3.33 in
 Width: 3.51 in
 Colors: 3
 Colorway: Colorway 1
 Zoom: 1:1

Machine format: Tajima
 Color changes: 2
 Stops: 3
 Trims: 41
 Appliqués: 0
 Left: 46.7 mm
 Right: 42.5 mm
 Up: 49.7 mm
 Down: 34.9 mm
 EndX: 0.00 in
 EndY: 0.00 in
 Area 11.70 in²
 Max stitch: 6.9 mm
 Min stitch: 0.1 mm
 Max jump: 6.9 mm
 Total thread: 132.02ft
 Total bobbin: 44.40ft

Stop Sequence:

#	N#	Color	St.	Code	Name	Chart
1.	8	Black	4,020	8	Black	Default
2.	12	Orange	398	12	Orange	Default
3.	1	Orange	4,130		R255 G120 B67	



Production Worksheet

Wilcom EmbroideryStudio - Designing



Design: **4**

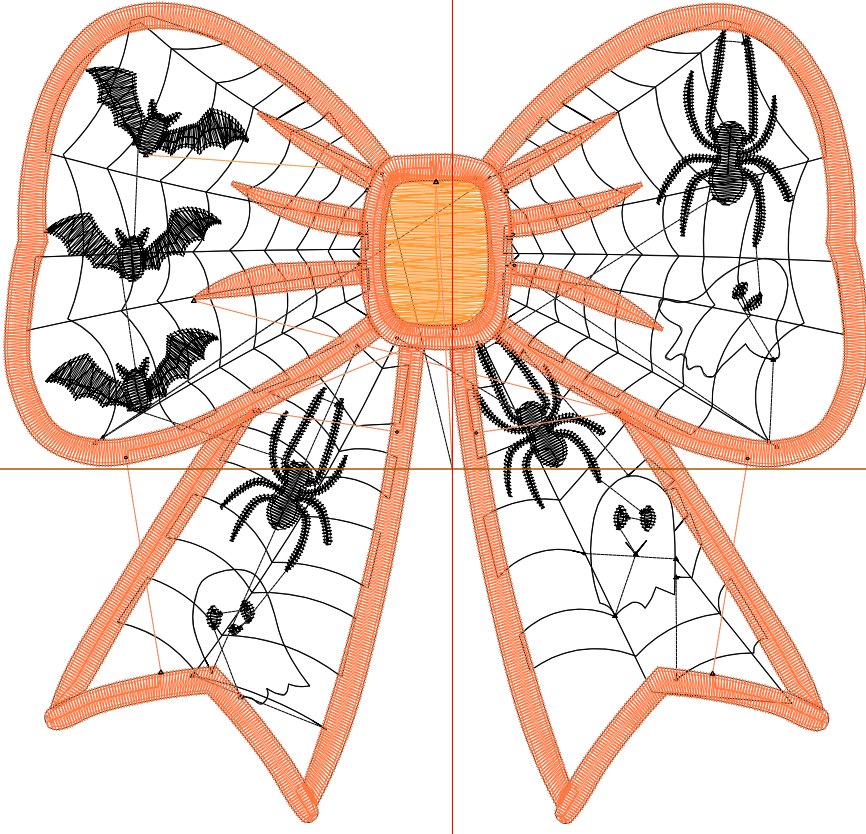
Title:

Stitches: 11,049
Height: 4.28 in
Width: 4.51 in
Colors: 3
Colorway: Colorway 1
Zoom: 1:1

Machine format: Tajima
Color changes: 2
Stops: 3
Trims: 44
Appliqués: 0
Left: 59.4 mm
Right: 55.2 mm
Up: 61.8 mm
Down: 47.0 mm
EndX: 0.00 in
EndY: 0.00 in
Area: 19.32 in²
Max stitch: 6.6 mm
Min stitch: 0.0 mm
Max jump: 6.6 mm
Total thread: 190.42ft
Total bobbin: 69.29ft

Stop Sequence:

#	N#	Color	St.	Code	Name	Chart
1.	8	Black	5,028	8	Black	Default
2.	12	Orange	585	12	Orange	Default
3.	1	Orange	5,434		R255 G120 B67	



Production Worksheet

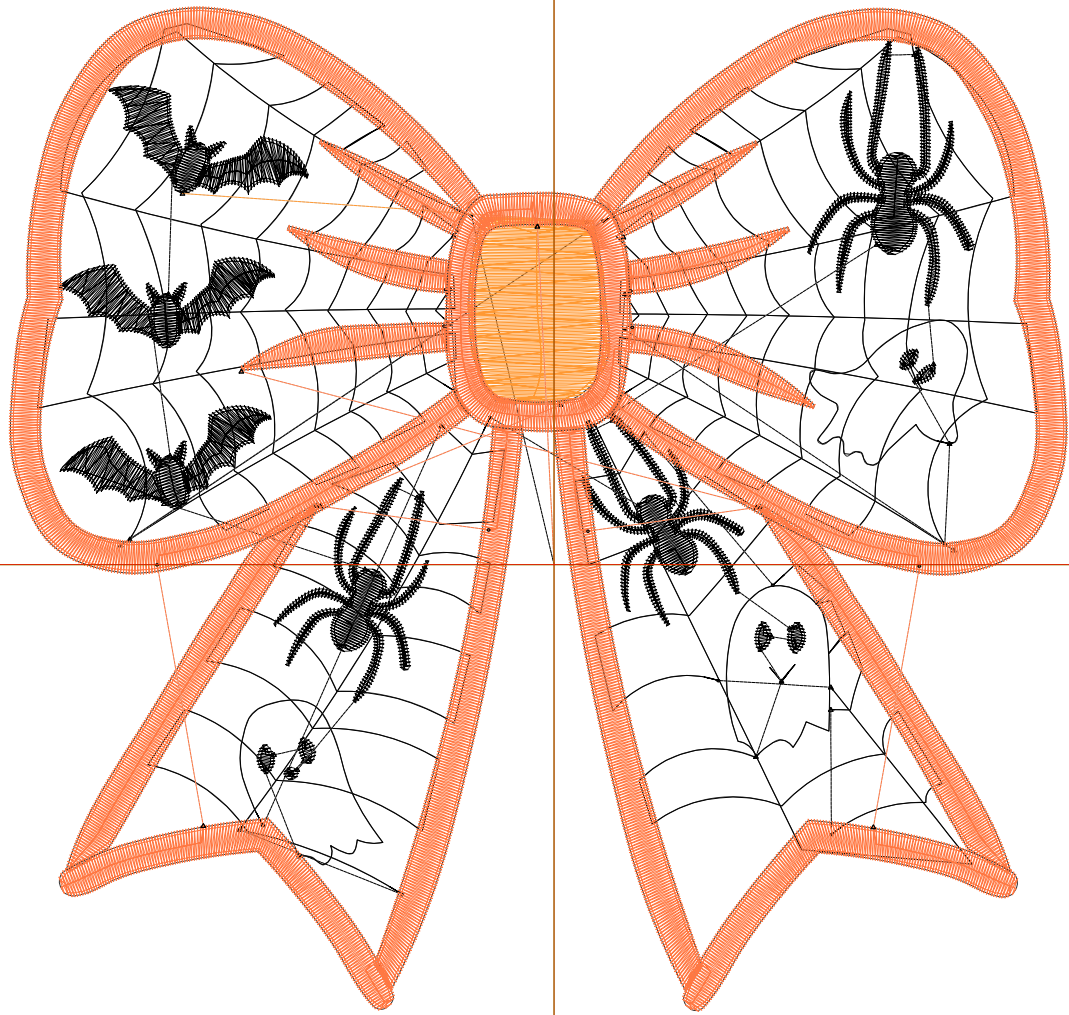
Wilcom EmbroideryStudio - Designing



Design: **5**

Title:

Stitches: 13,576
Height: 5.23 in
Width: 5.51 in
Colors: 3
Colorway: Colorway 1
Zoom: 1:1



1

1

2

2

Production Worksheet

Wilcom EmbroideryStudio - Designing



Design: **5**

Title:

Stitches: 13,576
 Height: 5.23 in
 Width: 5.51 in
 Colors: 3
 Colorway: Colorway 1
 Zoom: 1:1

Machine format: Tajima
 Color changes: 2
 Stops: 3
 Trims: 44
 Appliqués: 0
 Left: 72.1 mm
 Right: 67.9 mm
 Up: 73.8 mm
 Down: 59.1 mm
 EndX: 0.00 in
 EndY: 0.00 in
 Area 28.84 in²
 Max stitch: 7.0 mm
 Min stitch: 0.0 mm
 Max jump: 7.0 mm
 Total thread: 257.95ft
 Total bobbin: 99.49ft

Stop Sequence:

#	N#	Color	St.	Code	Name	Chart
1.	8		6,003	8	Black	Default
2.	12		807	12	Orange	Default
3.	1		6,764		R255 G120 B67	

Production Worksheet

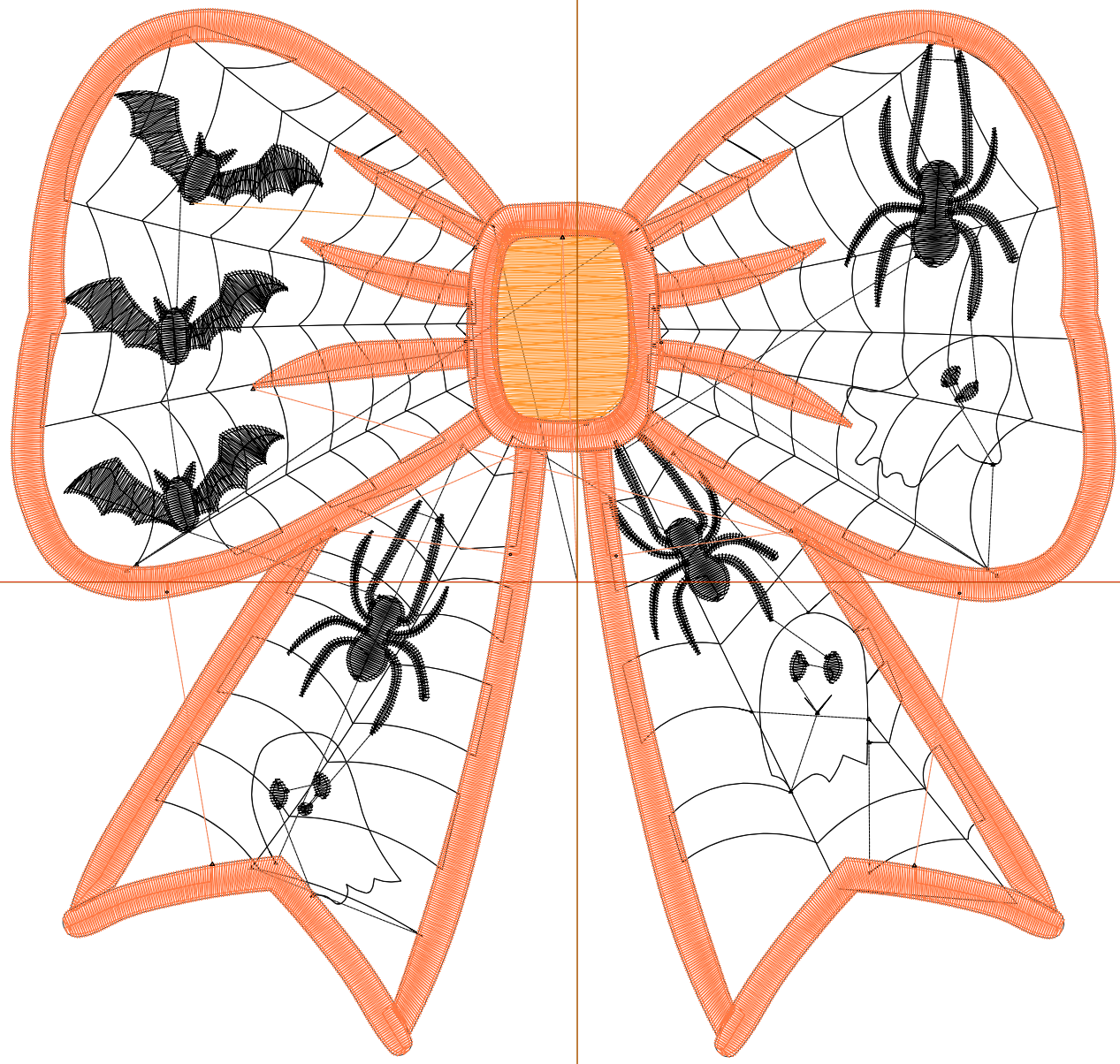
Wilcom EmbroideryStudio - Designing



Design: **6**

Title:

Stitches: 16,410
Height: 6.18 in
Width: 6.51 in
Colors: 3
Colorway: Colorway 1
Zoom: 1:1



Production Worksheet

Wilcom EmbroideryStudio - Designing



Design: **6**

Title:

Stitches: 16,410
 Height: 6.18 in
 Width: 6.51 in
 Colors: 3
 Colorway: Colorway 1
 Zoom: 1:1

Machine format: Tajima
 Color changes: 2
 Stops: 3
 Trims: 51
 Appliqués: 0
 Left: 84.8 mm
 Right: 80.6 mm
 Up: 85.9 mm
 Down: 71.1 mm
 EndX: 0.00 in
 EndY: 0.00 in
 Area 40.27 in²
 Max stitch: 7.0 mm
 Min stitch: 0.0 mm
 Max jump: 7.0 mm
 Total thread: 340.87ft
 Total bobbin: 137.60ft

Stop Sequence:

#	N#	Color	St.	Code	Name	Chart
1.	8		7,076	8	Black	Default
2.	12		1,080	12	Orange	Default
3.	1		8,252		R255 G120 B67	

Production Worksheet

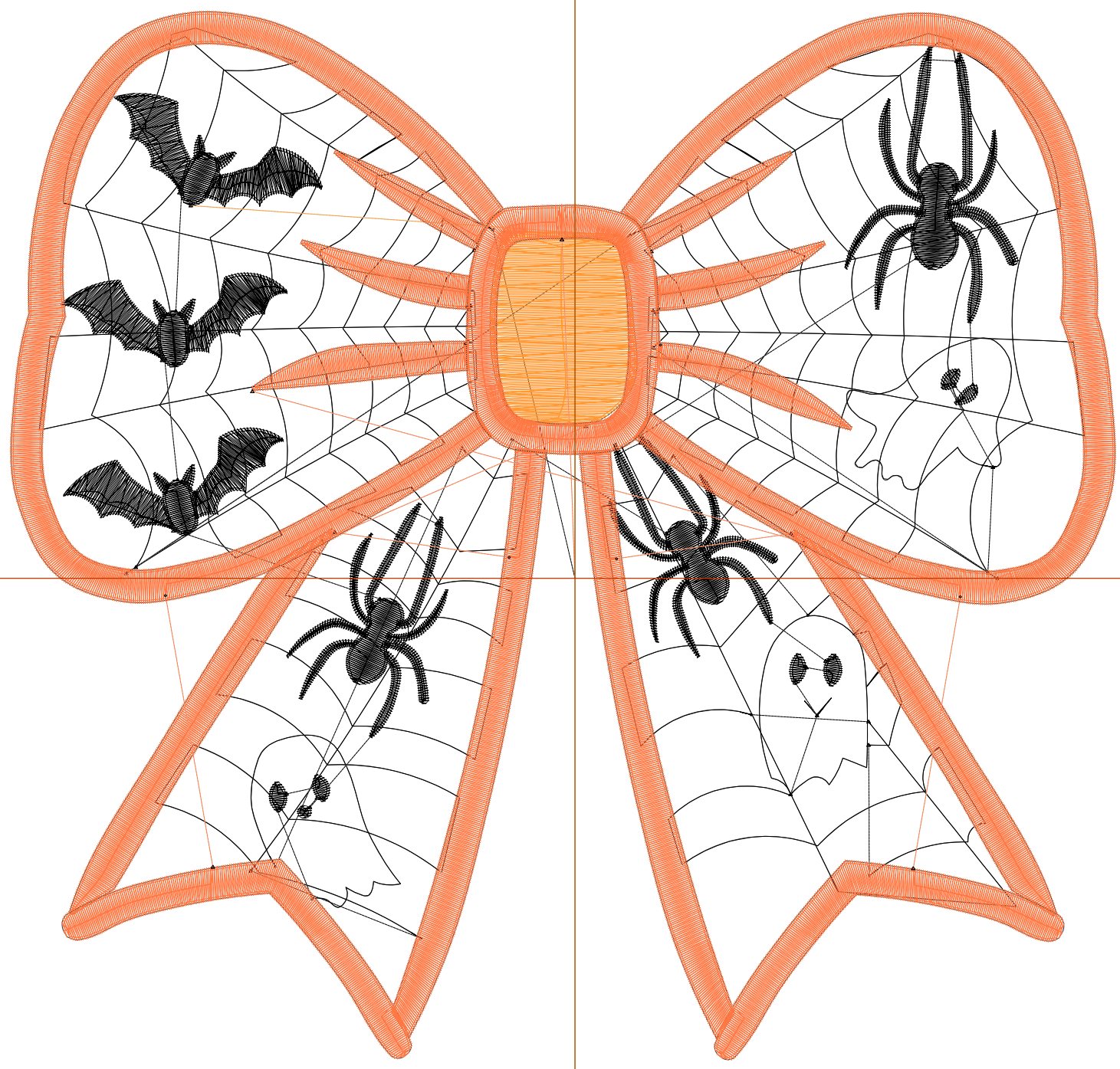
Wilcom EmbroideryStudio - Designing



Design: **7**

Title:

Stitches: 19,430
Height: 7.13 in
Width: 7.51 in
Colors: 3
Colorway: Colorway 1
Zoom: 1:1



Production Worksheet

Wilcom EmbroideryStudio - Designing



Design: **7**

Title:

Stitches: 19,430
 Height: 7.13 in
 Width: 7.51 in
 Colors: 3
 Colorway: Colorway 1
 Zoom: 1:1

Machine format: Tajima
 Color changes: 2
 Stops: 3
 Trims: 52
 Appliqués: 0
 Left: 97.5 mm
 Right: 93.3 mm
 Up: 98.0 mm
 Down: 83.2 mm
 EndX: 0.00 in
 EndY: 0.00 in
 Area 53.58 in²
 Max stitch: 7.0 mm
 Min stitch: 0.0 mm
 Max jump: 6.9 mm
 Total thread: 435.10ft
 Total bobbin: 181.70ft

Stop Sequence:

#	N#	Color	St.	Code	Name	Chart
1.	8		8,274	8	Black	Default
2.	12		1,381	12	Orange	Default
3.	1		9,773		R255 G120 B67	