

Production Worksheet

Wilcom EmbroideryStudio - Designing



Design: **3**

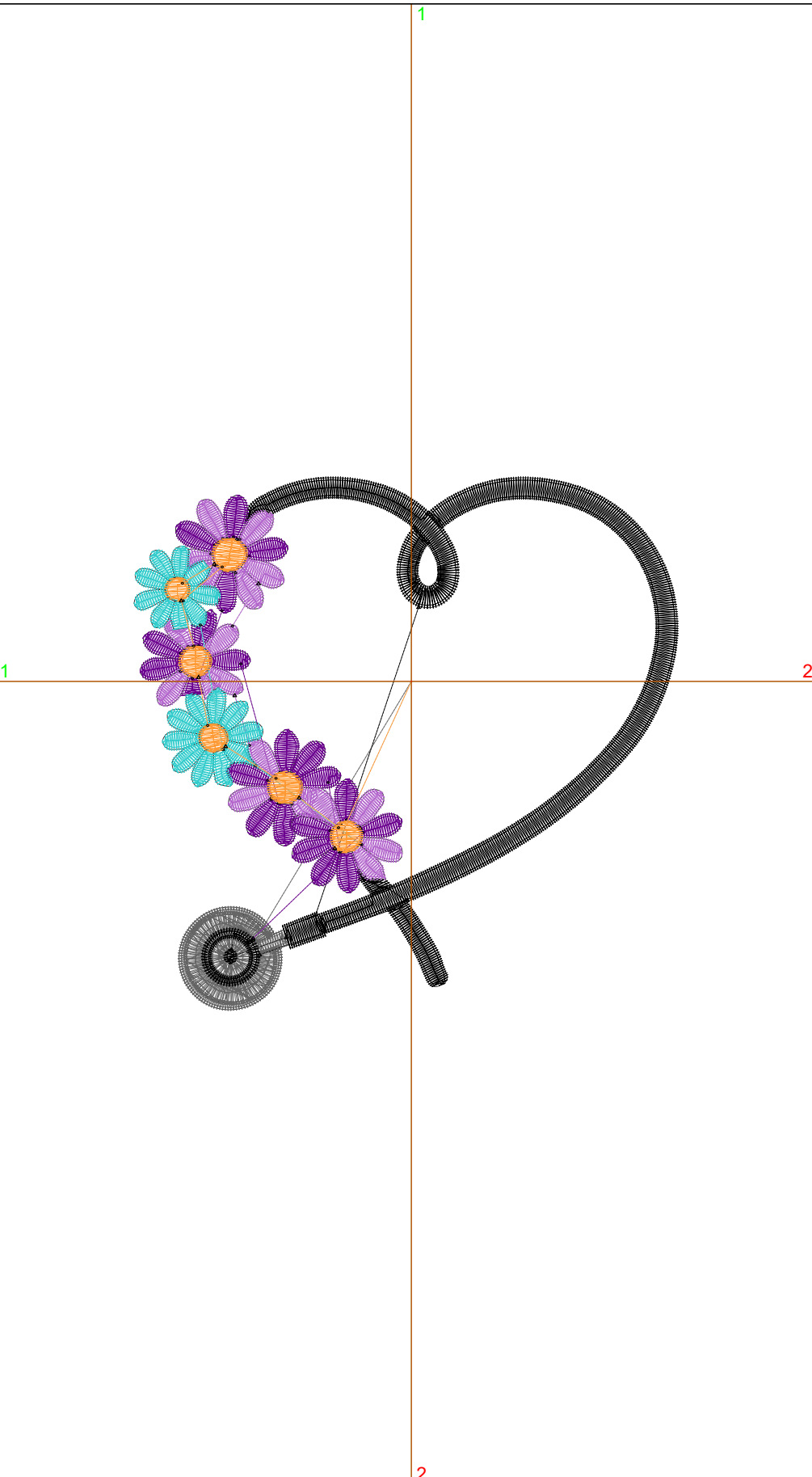
Title:

Stitches: 6,892
 Height: 3.44 in
 Width: 3.51 in
 Colors: 6
 Colorway: Colorway 1
 Zoom: 1:1

Machine format: Tajima
 Color changes: 5
 Stops: 6
 Trims: 38
 Appliqués: 0
 Left: 45.4 mm
 Right: 43.7 mm
 Up: 33.5 mm
 Down: 53.9 mm
 EndX: 0.00 in
 EndY: 0.00 in
 Area: 12.07 in²
 Max stitch: 6.6 mm
 Min stitch: 0.0 mm
 Max jump: 6.8 mm
 Total thread: 114.28ft
 Total bobbin: 39.76ft

Stop Sequence:

#	N#	Color	St.	Code	Name	Chart
1.	18		1,095	18	Grey	Default
2.	8		1,749	8	Black	Default
3.	1		1,362		R107 G0 B143	
4.	2		1,122		R179 G103 B204	
5.	5		969	5	Aqua	Default
6.	12		593	12	Orange	Default



Production Worksheet

Wilcom EmbroideryStudio - Designing



Design: **4**

Title:

Stitches: 8,795
 Height: 4.42 in
 Width: 4.51 in
 Colors: 6
 Colorway: Colorway 1
 Zoom: 1:1



Machine format: Tajima
 Color changes: 5
 Stops: 6
 Trims: 41
 Appliqués: 0
 Left: 58.1 mm
 Right: 56.4 mm
 Up: 45.9 mm
 Down: 66.3 mm
 EndX: 0.00 in
 EndY: 0.00 in
 Area: 19.92 in²
 Max stitch: 8.1 mm
 Min stitch: 0.1 mm
 Max jump: 6.9 mm
 Total thread: 167.45ft
 Total bobbin: 63.86ft

Stop Sequence:

#	N#	Color	St.	Code	Name	Chart
1.	18		1,385	18	Grey	Default
2.	8		2,291	8	Black	Default
3.	1		1,700		R107 G0 B143	
4.	2		1,413		R179 G103 B204	
5.	5		1,218	5	Aqua	Default
6.	12		786	12	Orange	Default

Production Worksheet

Wilcom EmbroideryStudio - Designing



Design: **5**

Title:

Stitches: 10,933
Height: 5.40 in
Width: 5.51 in
Colors: 6
Colorway: Colorway 1
Zoom: 1:1



Production Worksheet

Wilcom EmbroideryStudio - Designing



Design: **5**

Title:

Stitches: 10,933
 Height: 5.40 in
 Width: 5.51 in
 Colors: 6
 Colorway: Colorway 1
 Zoom: 1:1

Machine format: Tajima
 Color changes: 5
 Stops: 6
 Trims: 41
 Appliqués: 0
 Left: 70.8 mm
 Right: 69.1 mm
 Up: 58.4 mm
 Down: 78.8 mm
 EndX: 0.00 in
 EndY: 0.00 in
 Area 29.73 in²
 Max stitch: 10.0 mm
 Min stitch: 0.1 mm
 Max jump: 6.7 mm
 Total thread: 234.23ft
 Total bobbin: 95.13ft

Stop Sequence:

#	N#	Color	St.	Code	Name	Chart
1.	18		1,756	18	Grey	Default
2.	8		2,901	8	Black	Default
3.	1		2,059		R107 G0 B143	
4.	2		1,715		R179 G103 B204	
5.	5		1,490	5	Aqua	Default
6.	12		1,010	12	Orange	Default

Production Worksheet

Wilcom EmbroideryStudio - Designing



Design: **6**

Title:

Stitches: 13,129
Height: 6.38 in
Width: 6.51 in
Colors: 6
Colorway: Colorway 1
Zoom: 1:1



1

1

2

2

Production Worksheet

Wilcom EmbroideryStudio - Designing



Design: **6**

Title:

Stitches: 13,129
 Height: 6.38 in
 Width: 6.51 in
 Colors: 6
 Colorway: Colorway 1
 Zoom: 1:1

Machine format: Tajima
 Color changes: 5
 Stops: 6
 Trims: 41
 Appliqués: 0
 Left: 83.5 mm
 Right: 81.8 mm
 Up: 70.8 mm
 Down: 91.2 mm
 EndX: 0.00 in
 EndY: 0.00 in
 Area 41.50 in²
 Max stitch: 12.1 mm
 Min stitch: 0.0 mm
 Max jump: 7.0 mm
 Total thread: 311.95ft
 Total bobbin: 132.64ft

Stop Sequence:

#	N#	Color	St.	Code	Name	Chart
1.	18		2,213	18	Grey	Default
2.	8		3,487	8	Black	Default
3.	1		2,415		R107 G0 B143	
4.	2		2,002		R179 G103 B204	
5.	5		1,767	5	Aqua	Default
6.	12		1,243	12	Orange	Default