

Production Worksheet

Wilcom EmbroideryStudio - Designing



Design: **3**

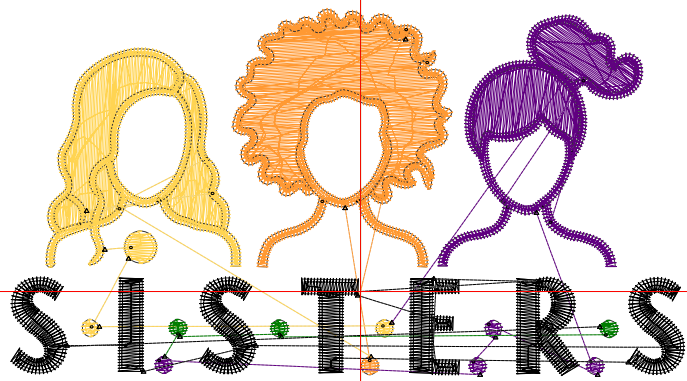
Title:

Stitches: 7,579
 Height: 1.91 in
 Width: 3.51 in
 Colors: 5
 Colorway: Colorway 1
 Zoom: 1:1

Machine format: Tajima
 Color changes: 4
 Stops: 5
 Trims: 32
 Appliqués: 0
 Left: 46.3 mm
 Right: 42.9 mm
 Up: 37.5 mm
 Down: 11.1 mm
 EndX: 0.00 in
 EndY: 0.00 in
 Area 6.72 in²
 Max stitch: 7.0 mm
 Min stitch: 0.0 mm
 Max jump: 7.0 mm
 Total thread: 109.25ft
 Total bobbin: 34.30ft

Stop Sequence:

| # | N# | Color | St. | Code | Name | Chart |
|----|----|-------|-------|------|---------------|---------|
| 1. | 12 | | 2,606 | 12 | Orange | Default |
| 2. | 4 | | 1,972 | | R255 G212 B82 | |
| 3. | 1 | | 1,616 | | R96 G0 B128 | |
| 4. | 2 | | 106 | | R0 G125 B0 | |
| 5. | 8 | | 1,277 | 8 | Black | Default |



Production Worksheet

Wilcom EmbroideryStudio - Designing



Design: **4**

Title:

Stitches: 9,807
 Height: 2.46 in
 Width: 4.51 in
 Colors: 5
 Colorway: Colorway 1
 Zoom: 1:1

Machine format: Tajima
 Color changes: 4
 Stops: 5
 Trims: 32
 Appliqués: 0
 Left: 59.0 mm
 Right: 55.6 mm
 Up: 44.4 mm
 Down: 18.0 mm
 EndX: 0.00 in
 EndY: 0.00 in
 Area 11.08 in²
 Max stitch: 6.9 mm
 Min stitch: 0.0 mm
 Max jump: 6.9 mm
 Total thread: 154.28ft
 Total bobbin: 52.32ft

Stop Sequence:

| # | N# | Color | St. | Code | Name | Chart |
|----|----|-------|-------|------|---------------|---------|
| 1. | 12 | | 3,422 | 12 | Orange | Default |
| 2. | 4 | | 2,521 | | R255 G212 B82 | |
| 3. | 1 | | 2,126 | | R96 G0 B128 | |
| 4. | 2 | | 122 | | R0 G125 B0 | |
| 5. | 8 | | 1,614 | 8 | Black | Default |



Production Worksheet

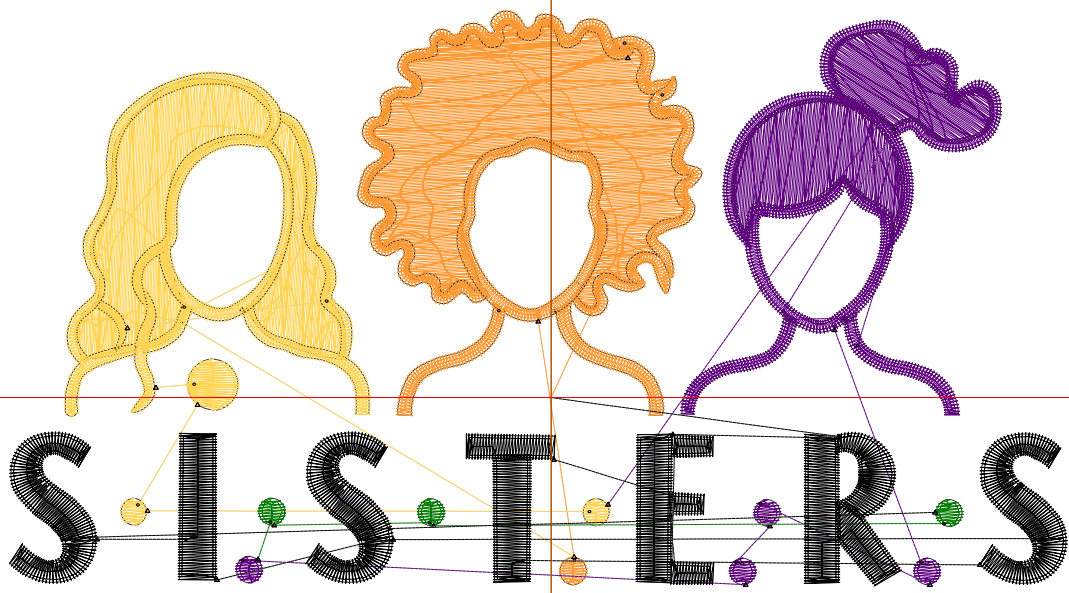
Wilcom EmbroideryStudio - Designing



Design: **5**

Title:

Stitches: 12,357
Height: 3.00 in
Width: 5.51 in
Colors: 5
Colorway: Colorway 1
Zoom: 1:1



Production Worksheet

Wilcom EmbroideryStudio - Designing



Design: **5**

Title:

Stitches: 12,357
 Height: 3.00 in
 Width: 5.51 in
 Colors: 5
 Colorway: Colorway 1
 Zoom: 1:1

Machine format: Tajima
 Color changes: 4
 Stops: 5
 Trims: 32
 Appliqués: 0
 Left: 71.7 mm
 Right: 68.3 mm
 Up: 51.3 mm
 Down: 24.9 mm
 EndX: 0.00 in
 EndY: 0.00 in
 Area 16.53 in²
 Max stitch: 7.0 mm
 Min stitch: 0.0 mm
 Max jump: 7.0 mm
 Total thread: 209.92ft
 Total bobbin: 75.37ft

Stop Sequence:

| # | N# | Color | St. | Code | Name | Chart |
|----|----|-------|-------|------|---------------|---------|
| 1. | 12 | | 4,408 | 12 | Orange | Default |
| 2. | 4 | | 3,205 | | R255 G212 B82 | |
| 3. | 1 | | 2,636 | | R96 G0 B128 | |
| 4. | 2 | | 142 | | R0 G125 B0 | |
| 5. | 8 | | 1,964 | 8 | Black | Default |

Production Worksheet

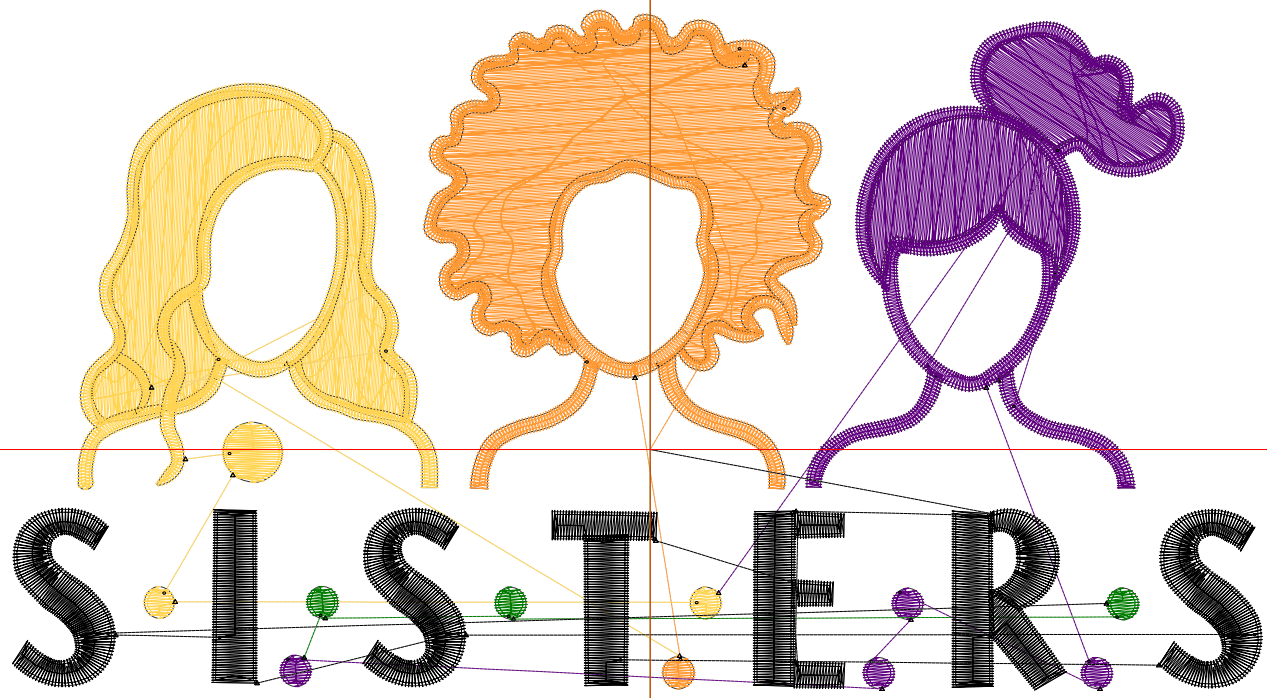
Wilcom EmbroideryStudio - Designing



Design: **6**

Title:

Stitches: 15,148
Height: 3.54 in
Width: 6.51 in
Colors: 5
Colorway: Colorway 1
Zoom: 1:1



Production Worksheet

Wilcom EmbroideryStudio - Designing



Design: **6**

Title:

Stitches: 15,148
 Height: 3.54 in
 Width: 6.51 in
 Colors: 5
 Colorway: Colorway 1
 Zoom: 1:1

Machine format: Tajima
 Color changes: 4
 Stops: 5
 Trims: 32
 Appliqués: 0
 Left: 84.4 mm
 Right: 81.0 mm
 Up: 58.2 mm
 Down: 31.8 mm
 EndX: 0.00 in
 EndY: 0.00 in
 Area 23.07 in²
 Max stitch: 7.0 mm
 Min stitch: 0.0 mm
 Max jump: 7.0 mm
 Total thread: 274.44ft
 Total bobbin: 102.76ft

Stop Sequence:

| # | N# | Color | St. | Code | Name | Chart |
|----|----|-------|-------|------|---------------|---------|
| 1. | 12 | | 5,425 | 12 | Orange | Default |
| 2. | 4 | | 3,951 | | R255 G212 B82 | |
| 3. | 1 | | 3,248 | | R96 G0 B128 | |
| 4. | 2 | | 164 | | R0 G125 B0 | |
| 5. | 8 | | 2,358 | 8 | Black | Default |

Production Worksheet

Wilcom EmbroideryStudio - Designing



Design: **7**

Title:

Stitches: 18,082
Height: 4.09 in
Width: 7.51 in
Colors: 5
Colorway: Colorway 1
Zoom: 1:1



Production Worksheet

Wilcom EmbroideryStudio - Designing



Design: **7**

Title:

Stitches: 18,082
 Height: 4.09 in
 Width: 7.51 in
 Colors: 5
 Colorway: Colorway 1
 Zoom: 1:1

Machine format: Tajima
 Color changes: 4
 Stops: 5
 Trims: 32
 Appliqués: 0
 Left: 97.1 mm
 Right: 93.7 mm
 Up: 65.1 mm
 Down: 38.7 mm
 EndX: 0.00 in
 EndY: 0.00 in
 Area 30.70 in²
 Max stitch: 7.0 mm
 Min stitch: 0.0 mm
 Max jump: 7.0 mm
 Total thread: 347.11ft
 Total bobbin: 134.41ft

Stop Sequence:

| # | N# | Color | St. | Code | Name | Chart |
|----|----|-------|-------|------|---------------|---------|
| 1. | 12 | | 6,489 | 12 | Orange | Default |
| 2. | 4 | | 4,773 | | R255 G212 B82 | |
| 3. | 1 | | 3,903 | | R96 G0 B128 | |
| 4. | 2 | | 186 | | R0 G125 B0 | |
| 5. | 8 | | 2,729 | 8 | Black | Default |